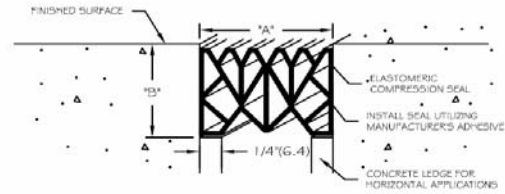
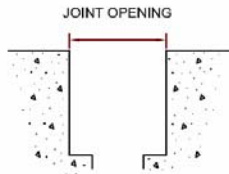


Installation procedure

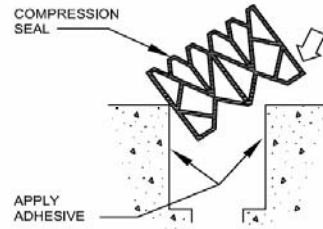
EJ-SAN Series compression seal



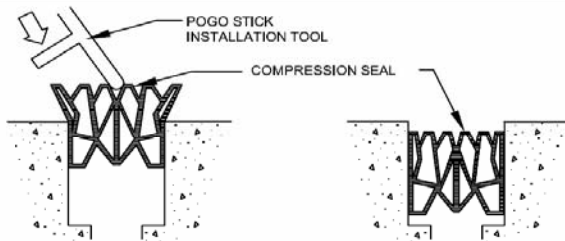
GENERAL NOTE:
REFER TO SHOP OR TYPICAL SALES
DRAWINGS FOR PROPER DIMENSIONS



1 CLEAN DIRT, STONES OR STANDING WATER FROM JOINT USING A BRUSH OR COMPRESSED AIR. INSTALL FIRE BARRIER IF REQUIRED PRIOR TO INSTALLATION OF COMPRESSION SEAL.



2 APPLY ADHESIVE BY BRUSH, SPATULA OR SPRAY EQUIPMENT TO EACH INNER JOINT FACE. POSITION COMPRESSION SEAL OVER THE JOINT AS SHOWN ABOVE.



3 COMPRESS BOTTOM PORTION OF COMPRESSION SEAL AND INSERT INTO JOINT AS SHOWN. COMPLETE INSTALLATION BY POSITIONING COMPRESSION SEAL WITHIN THE JOINT TO A DEPTH REQUIRED BY THE APPLICATION INVOLVED.

4 LOCATE 1/2" DIA. HOLE AND DRILL THRU SEAL AS SHOWN IN FIGURE 1 USING A STANDARD TWIST DRILL. USING A SHARP LONG BLADE KNIFE OR HACKSAW, CUT LOWER SECTION OF SEAL TO 1/2" DIA. HOLE AS SHOWN IN FIGURE 1. UNDERCUT SEAL AS SHOWN AND BEND IN DESIRED POSITION. INSTALL AS SHOWN IN FIGURE 2.

5 LOCATE 1/2" DIA. HOLE AND DRILL THRU SEAL AS SHOWN IN FIGURE 1 USING A STANDARD TWIST DRILL. CONSTRUCT TWO LINES TO FORM A TRIANGLE BELOW THE 1/2" DIA. HOLE AS SHOWN. USING A SHARP LONG BLADE KNIFE, CUT ALONG 45 SLOPED LINES AND REMOVE TRIANGULAR SHAPED PIECE OF COMPRESSION SEAL AS SHOWN IN FIGURE 1. BEND SEAL DOWN AND INSTALL INTO JOINT AS SHOWN IN FIGURE 2 CONTINUE NORMAL SEALING PROCEDURE.

SEAL UPTURN PROCEDURE

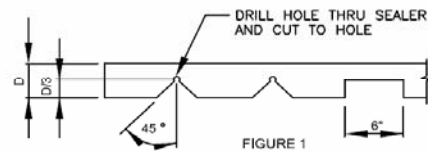


FIGURE 1

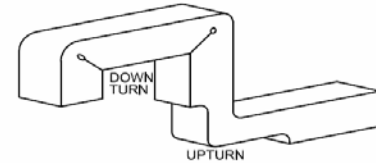


FIGURE 2

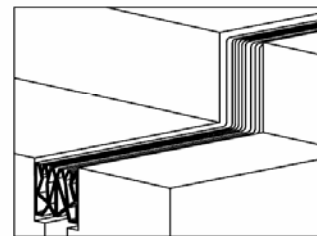


FIGURE 3