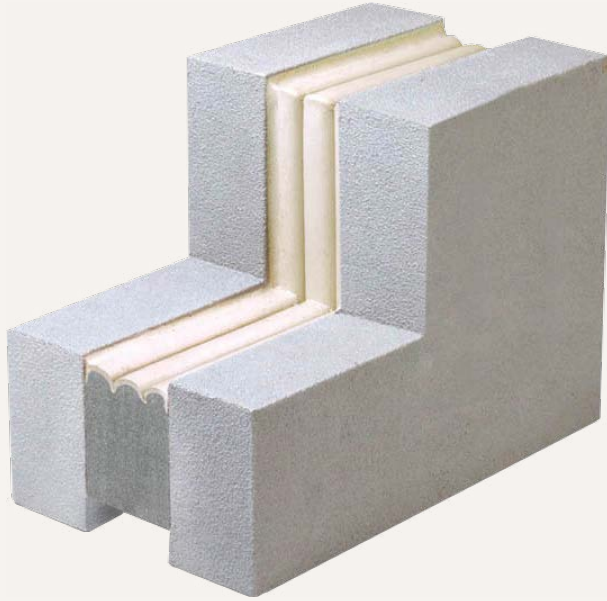


Seismic

COMPRESSION SEAL (SES)



Structural, high-movement joints. Nystrom's Seismic Compression Seal is precompressed and designed for use in structural, high-movement joints. Conforming to joint gap irregularities, it is held in place by the expanding foam and field-installed silicone caulk. It is watertight, 100% free of wax or asphalt compounds, has non-invasive anchoring, and is thermally insulating.

FEATURES

SOUND ATTENUATING Acoustic dampening rated STC 52 - OITC 38.

COLOR COORDINATING Add a complementary color to your building with one of the available pre-tinted silicone colors.

OMNI-DIRECTIONAL Curves and abrupt changes in building elements are easily accommodated while maintaining its watertightness.

DETAILS

MATERIAL Silicone bellow with foam sealant

SIZE 1/2 inch to 12 inches

LENGTH

- 10 linear foot roll for sizes up to 1.25 inches
- 6.56 linear feet (2 meter)

APPLICATION Interior or Exterior

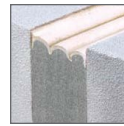
INSTALLATION Wall

COLORS Sikasil WS-295

OPTIONS Terminations and Transitions

MOVEMENT +/-50% (Total 100%)

MATERIALS



Silicone Bellow

OPTIONS



Terminations



Transitions

MODELS

MODEL	JOINT SIZE at mean T° F	SEAL DEPTH
SES-050	1/2" (12mm)	1-3/4" (45mm)
SES-075	3/4" (20mm)	1-3/4" (45mm)
SES-100	1" (25mm)	1-3/4" (45mm)
SES-200	2" (50mm)	2-1/2" (65mm)
SES-300	3" (75mm)	3-1/2" (90mm)
SES-400	4" (100mm)	4-1/2" (114mm)
SES-500	5" (125mm)	5-1/2" (140mm)

MODEL	JOINT SIZE at mean T° F	SEAL DEPTH
SES-600	6" (150mm)	6" (150mm)
SES-700	7" (175mm)	7" (175mm)
SES-800	8" (200mm)	8" (200mm)
SES-850	8-1/2" (216mm)	8" (200mm)
SES-900	9" (229mm)	8" (200mm)
SES-950	9-1/2" (241mm)	8" (200mm)
SES-1000	10" (254mm)	8" (200mm)

MOVEMENT OF +/-50% (TOTAL 100%)

Notes: Sizes from 1/2" (12mm) to 1-1/4" (30mm) are manufactured with a single silicone face bellow. Larger sizes up to 8" (200mm) are manufactured with multiple bellows.

Additional sizes available in 1/4" increments from 1" to 6", 1/2" increments from 6" to 8".