

9300 73rd Ave N.
Brooklyn Park, MN 55428

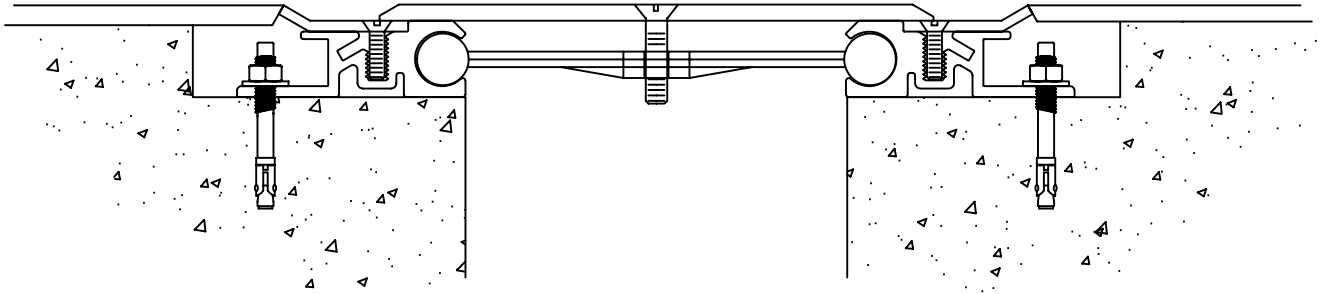
Toll-Free: 800-547-2635
Fax 800-317-8770



Right to site.

Direct Phone: 763-488-9200
Direct Fax: 763-488-9201

e-mail: info@nystrom.com
Internet: www.nystrom.com



Seismic Floor Series Model(s) EJ-SFX & EJ-SFX-C Horizontal Expansion Control Systems

The following installation procedure is very important and must be fully understood prior to beginning any work. To ensure proper installation and performance of expansion joint system the following actions must be completed by the installing contractor. Failure to do so will affect product warranty.

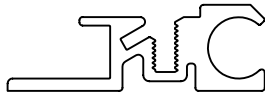
- 1) Carefully read and understand installation procedure. Contact Technical Service Department for product assistance.
- 2) Inspect all shipments and materials for missing or damaged components and hardware. Contact Customer Service with order number and invoice for prompt assistance.
- 3) Inspect substrate or adjacent construction for acceptance before beginning work. Report unacceptable construction to the project manager for scheduled repair work.

PN: N20133

Standard Components



1/4" x 2 1/4" Threaded
Concrete Anchor w/nut & washer
P/n: 6581



Aluminum Base Extrusion
P/n: 15804



*Aluminum Wall Mount Extrusion
P/n: 17032



1/4" X 1 1/4" Lg Screw
P/n: 5621

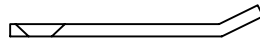


1/4" X 3/4" Lg Screw
P/n: 5620

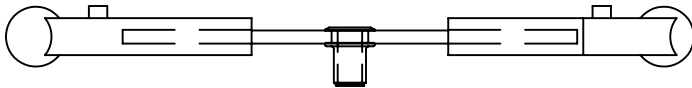


*1/4" Dia Tapcon
Concrete Anchor
P/n: 6517

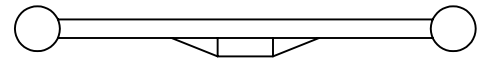
Components shown below vary in size depending on model of system



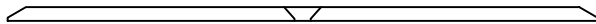
Extension profile



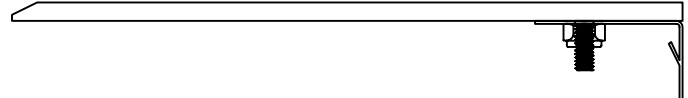
Self-centering bar
models EJ-SFX-400 thru EJ-SFX-2400



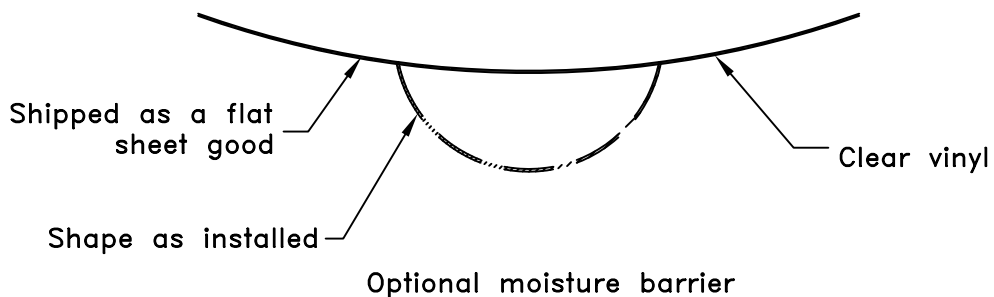
Self-centering bar
model EJ-SFX-200



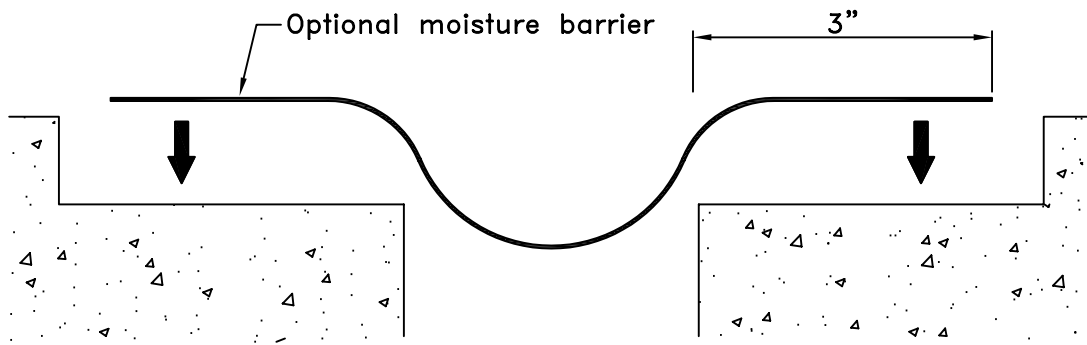
3/16" thick Cover plate



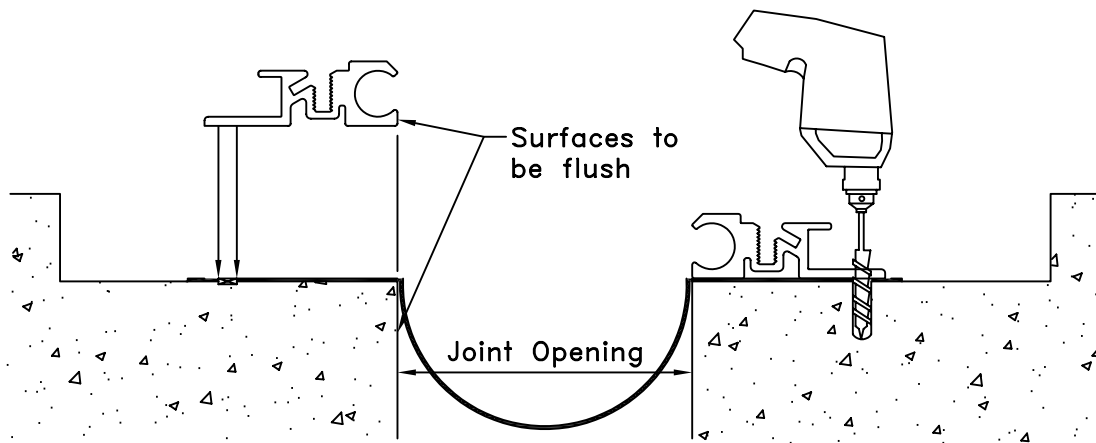
*3/16" thick Corner Cover plate



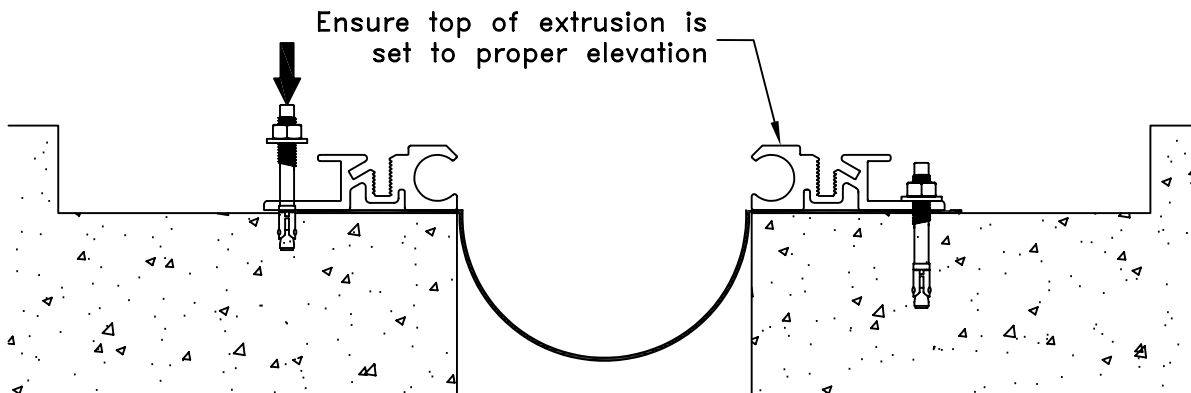
*-Denotes Corner Condition



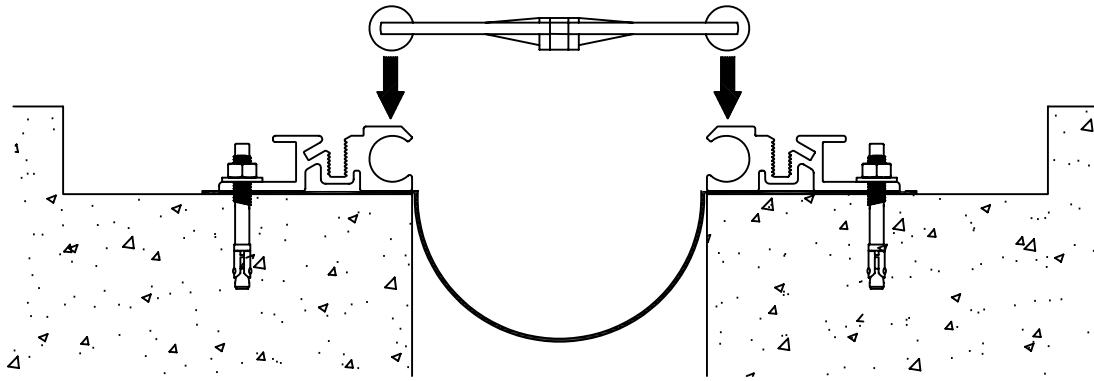
1 Optional:
Position the moisture barrier into the blockout. Maintain proper overlap and temporarily affix with duct tape.



2 Position the base member assembly on block out so cavity of base member is flush with the edge of the opening. Using base member as a template and with it's position fixed, drill hole for 1/4" x 2 1/4" concrete anchor to proper depth. Clean out holes.

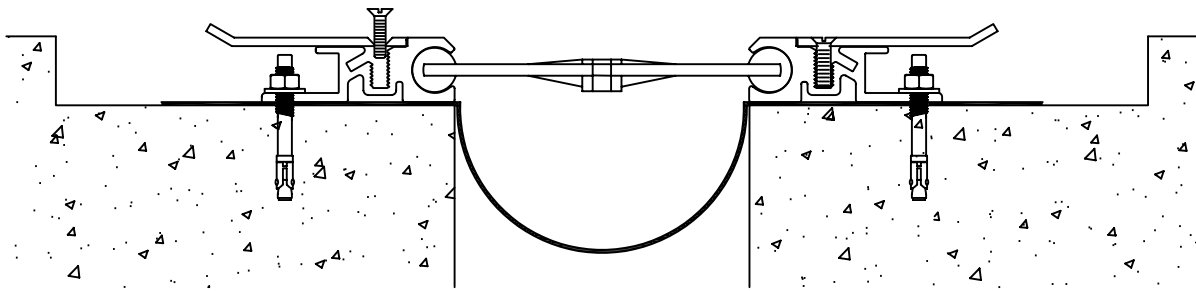


3 Follow manufacture's recommendations for proper anchor installation. Remove all debris from moisture barrier by utilizing shop vac. Caution – Do Not install all base members prior to reviewing step 4.



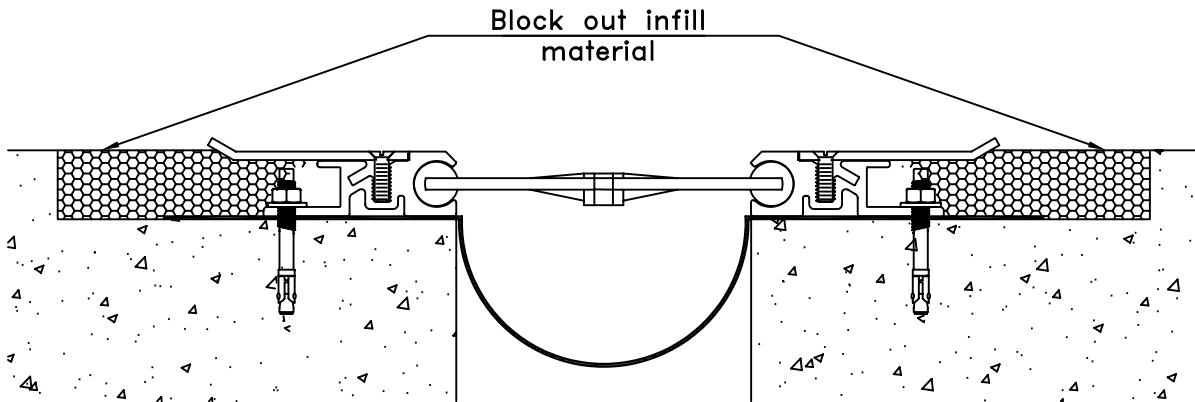
4

As work progresses with placement of base members, install self-centering bars by sliding the spherical ends of the bars into and through the circular cavities of the base members. Set at an approximate spacing of 18" O.C. ensure that the "TOP" indicator is facing up and that all bars are in the same orientation.



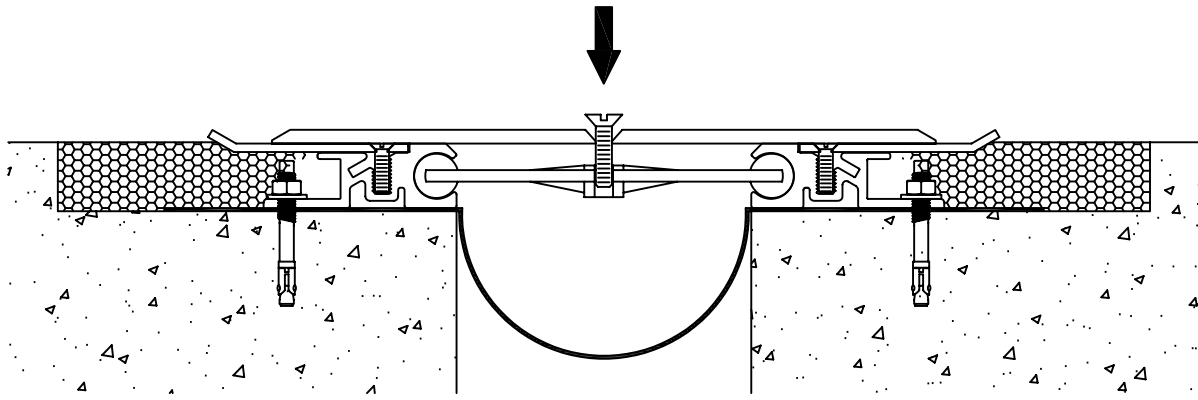
5

Attach extension profile to base member utilizing 1/4" diameter machine screw.

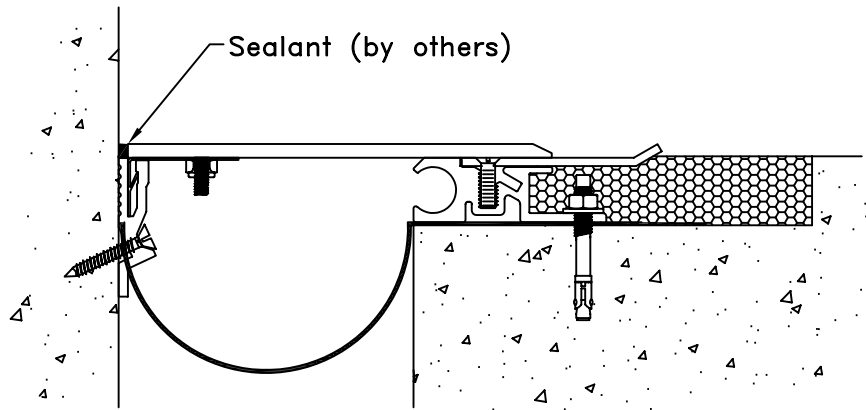


6

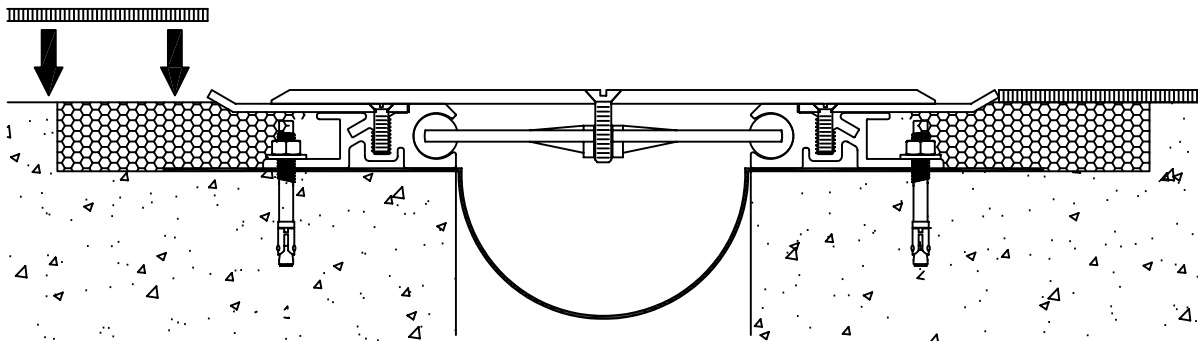
Fill block out with high quality non-shrink cementitious filler material. Use grout or equivalent for infill material. Protect surfaces during placement of filler material.



- 7 Position the coverplate over the expansion opening, align the pre-drilled holes in the slide plate with threaded insert in self-centering bars. Fasten with 1/4" x 1 1/4" flat head machine screws. Tighten to create measurable tension in the bar.



- 8 Position the coverplate with spring steel extension over the wall mounted aluminum bracket and slide down into extrusion. After the cover plate has been installed, contractor shall apply a continuous bead of sealant (by others) along edge of coverplate assembly and face of wall.



- 9 Install flooring material ensuring that it is flush with the top of the expansion joint system. Caution – contact flooring manufacturer to discuss application and procedure for proper installation.