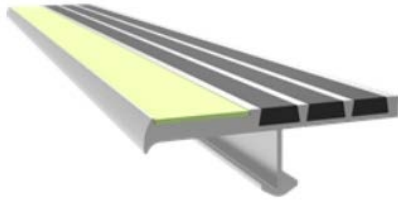


STAIR TREAD NOSING SAFE-T-LUME[™] RIBBED BAR

Model: STSM



Stair treads and nosings are designed for years of safe egress. Proper installation is critical to the product performance. Locally accepted installation practices and procedures should be followed to ensure a safe stairway system that meets all local code requirements, including Occupational Safety and Health Administration (OSHA), Americans with Disabilities Act (ADA), International Code Council (ICC) and International Building Code (IBC).

Introduction + Safety

Please read the complete instructions carefully before beginning any work. To ensure proper installation and performance of the product, the following actions must be completed by the installing contractor. Failure to do so will affect product warranty.

GENERAL SAFETY PRECAUTIONS Improper selection, installation, or use can cause personal injury or property damage. It is solely the responsibility of the user, through its own analysis to select products suitable for their specific application requirements, ensure they are properly maintained, and limit their use to its intended purpose. Follow proper local, state and federal regulations for proper installation and operation requirements.

Transportation + Storage

- Inspect all shipments and materials for missing or damaged components and hardware.
- Material must be stored in a clean, dry location.

Preparation

- Locate the packing slip(s) and/or shop drawings.
- Verify that all products listed on the packing slip are included in the package.
- Check the products for damage. If products are damaged, report a freight claim immediately and leave the products in their packaging. If you sign for products without reporting damage you waive your right to a freight claim and will be responsible for their replacement cost.
- Read the instructions thoroughly before beginning installation.

Tool List

- Tamping tool
- Screwdriver, Phillips
- Drill (for recessed nosing)
- Rabbit drill bit, 3/8" (for recessed nosing)
- Screws, #10 (for mechanically fastened nosings)
- Construction adhesive (for mechanically fastened nosings)
- Clean-up tools – see Maintenance section on Cleaning

INSTALLATION

Slip-resistant metal stair nosings are designed to be fully embedded in the substrate (most often concrete) which provides total support for the nosing.

Note: Any voids left between the underside of the metal stair nosing and the substrate will allow flexing of the stair nosing itself. It is vital that the installer tamp down the stair nosings to totally seat into the substrate and fully rest upon any riser return, such as in pan-filled steps. This action will prevent the occurrence of hollows and voids, which can lead to flexing and cantilevering of the nosing.

Cast-In (Steel Pan Stairs, Poured Concrete or Terrazzo):

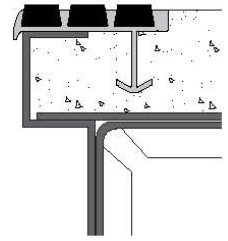
1. Pour the concrete.
2. Place the stair nosing into position in the concrete.
3. Tamp the stair nosing to ensure proper concrete formation around the anchors on the undersides.

Mechanically Fastened (Poured Concrete)

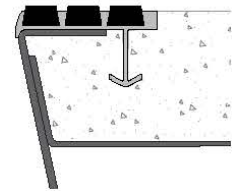
1. Block out the concrete on the front edge of the stair to the exact height and width of the nosing.
2. Pour the concrete.
3. After concrete is set remove block-out and place the stair nosing into position.
4. Secure nosing with expansion screws.

Mechanically Fastened Surface Mount (Wood, Marble or Terrazzo Stairs)

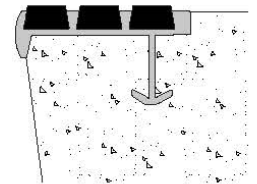
1. Align nosing flush to end of wood tread.
2. Fasten with #10 wood screws in pre-drilled, countersunk holes.



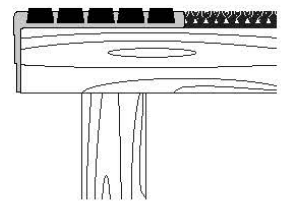
Steel Pan Stair
Concrete filled



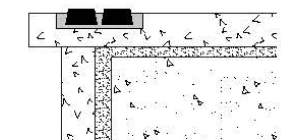
Sloped Riser Steel
Pan Stair
Concrete filled



Concrete Stair



Wood Tread
backed with carpet, tile or
other material



Terrazzo/Marble Tread
rabbeted into tread

Recessed/Flush Mount

1. Mark and rabbit out 3/8-inch-deep channel for tread to sit into.
2. Fasten with #10 screws in pre-drilled, countersunk holes.

In lieu of fastening with screws

1. Apply a minimum 3/16-inch (5mm) bead of construction adhesive (by others) to the underside of the nosing. Apply in a zig-zag pattern along the full width and length of the nosing.

Stair Nosing Guards™

Protects stair nosings during installation and building construction from damage. Guards are preinstalled at factory, with taped ends to prevent concrete overspray.

Field Installed Stair Nosing Guards

Guards to be installed on nosings (if not pre-installed) **prior to pouring concrete.**

1. Install over back edge of nosing first, then clip front end over the nose. See Figure 1.
2. Tape guard ends with painters' tape to prevent concrete from seeping. See Figure 2.

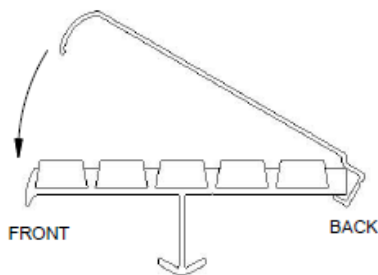


Figure 1

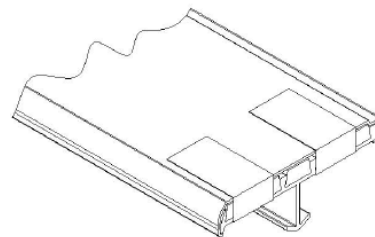


Figure 2

Guard Removal - See Figure 3

Guards to be removed and recycled when construction is complete.

1. Pry guard from bottom edge of nose with a flat screwdriver or utility knife.
2. Bend back over 90° until guard snaps at relief just below concrete surface.

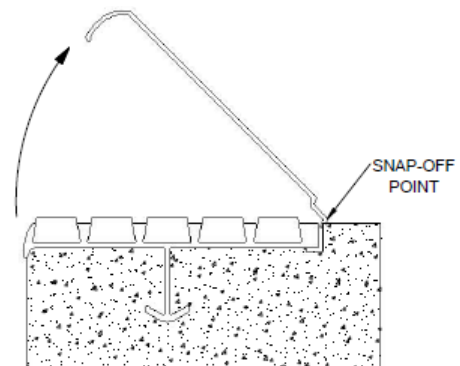


Figure 3

OPERATION

Photoluminescent Option

Exposure Requirements:

1. The minimum amount of exposure to direct sunlight is 60 minutes.
2. The minimum amount of exposure to artificial ambient illumination is 60 minutes from the following:
 - o Fluorescent straight tube T8 or T12, 4000 – 4500 K color temperature
 - o Incandescent soft white 2700 – 3000 K color temperature
 - o LED 2700 – 3000 K color temperature
3. The control of the ambient illumination necessary to charge the luminous egress path marking system should be restricted to authorized personnel only.
4. Failure to supply the above minimum exposure can prevent the luminous egress path marking from performing as intended.
5. No specific building surface treatment is required for the luminous egress path marking system to function properly.

MAINTENANCE

Keep stair treads and nosings free of debris and dirt by sweeping or vacuuming regularly. Heavy-duty commercial cleaners will not harm nosings but are generally not necessary. If nosings are damaged, please contact the factory for a repair kit or replacement nosings.

Cleaning

- Treads should be swept with a broom or vacuumed with a heavy-duty commercial vacuum cleaner at least once a week.
- When needed, scrub surface vigorously with a stiff bristled brush using a mild detergent. **Do not use any product containing solvents, such as Acetone. It will breakdown the abrasive adhesive.** We suggest using Murphy's Oil Soap® or SimpleGreen®. Rinse thoroughly with water after cleaning.
- Scuff marks on the aluminum nose can be removed by rubbing with a fine steel wool and a commercial cleaning agent.
- To remove snow and ice use deicing compounds such as calcium chloride or sodium chloride.
- DO NOT CLEAN ABRASIVE GRIT with PRESSURE WASHER
- EcoTread™ can be pressure washed: Recommended max. pressure: 3200 psi, 2.5 gpm flow.

QUESTIONS?

For more information on installation, repair or replacement kits, please visit [nystrom.com](https://www.nystrom.com)