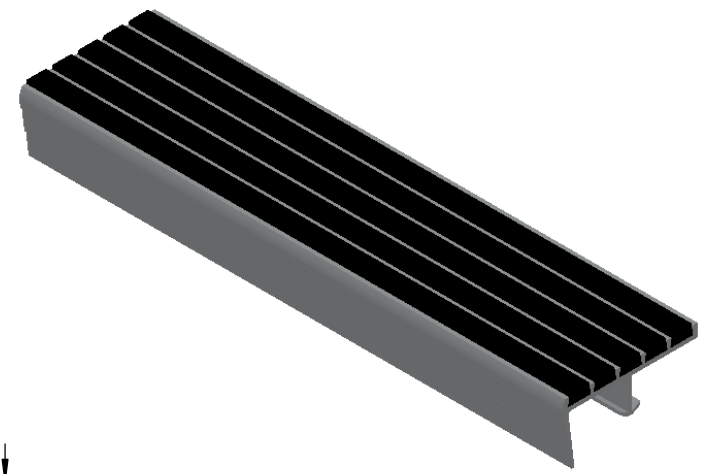
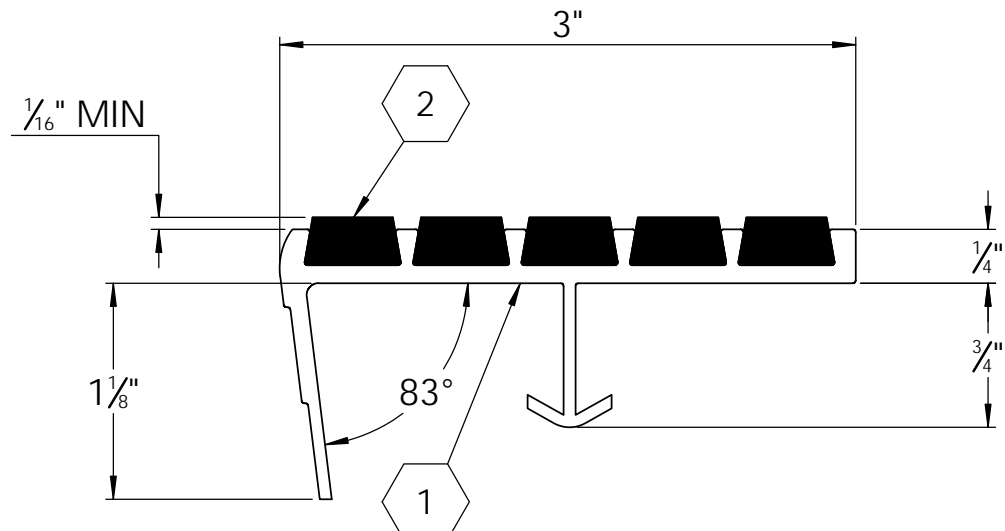


B

B



MODEL A3E-ECO


(SINGLE STAGE ECO-TREAD RIBS)

SPECIFICATIONS:

- ① **BASE:** EXTRUDED ALUMINUM ALLOY 6063 T-5
- ② **ECOTREAD:** RECYCLED RUBBER SHEET
8MM RECYCLED RUBBER GRANULES ENCAPSULATED IN A WEAR AND WATER RESISTANT ELASTOMERIC NETWORK. 2 PART
- 3. **BASE FINISH:** MILL
- 4. **POURED CONCRETE STAIRS:** NOSING SHALL TERMINATE NO MORE THEN 3" FROM END OF STEPS
- 5. **CONCRETE FILLED STEEL PAN STAIRS:** NOSING SHALL BE FULL LENGTH OF STEPS, LESS 1/8" CLEARANCE

- 6. **COLOR:** BLACK (STANDARD), SAFETY YELLOW, BLACK-BLUE, BLACK-GRAY
- 7. **LENGTH:** 12'0" MAXIMUM
- 8. UL 1994 LISTED: COMBINED WIDTH OF PHOTO-LUMINESCENT MATERIAL SHALL NOT BE LESS THAN 1"

LENGTH	QTY	COLOR

PROJECT:			
ARCHITECT:			
CONTRACTOR:			
QTY:			
PART#:		STSB-A3E-ECO	
 9300 73rd Avenue North Minneapolis, MN 55428		TITLE:	
		V851, Stair Tread, Recycled Rubber, 5 Eco-Tread Ribs, Long Nose Angled, Alum Extruded Anchor,	
NAME	DATE	SIZE	DWG. NO.
DRAWN: DKL	3/31/23	A	Nystrom STN STSB-A3E-ECO ShpDr
RELEASED: GLN	3/31/23	WEIGHT: 1.33 LB	

PROPRIETARY AND CONFIDENTIAL: THE INFORMATION CONTAINED IN THIS DRAWING IS THE SOLE PROPERTY OF NYSTROM. ANY REPRODUCTION IN PART OR AS A WHOLE WITHOUT THE WRITTEN PERMISSION OF NYSTROM IS PROHIBITED.

A

A