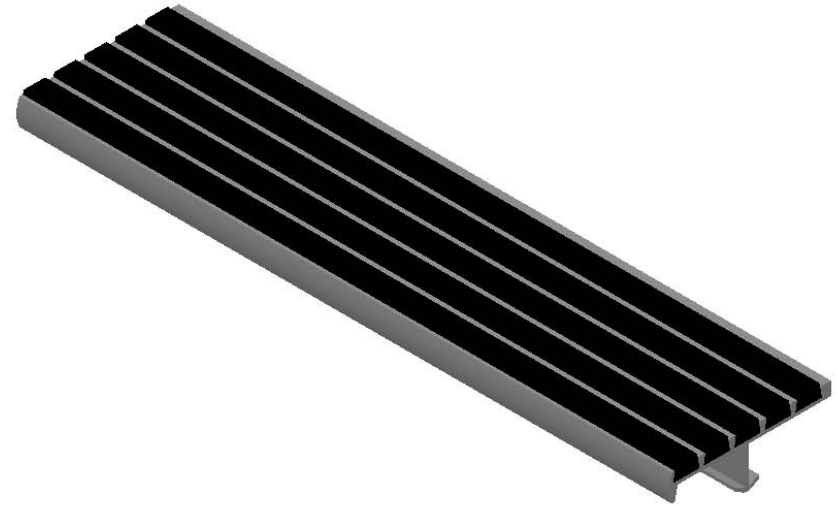


MODEL C3E


(SINGLE STAGE RIBBED RECYCLED RUBBER)



SPECIFICATIONS:

- ① **BASE:** EXTRUDED ALUMINUM ALLOY 6063 T-6
- ② **ECOTREAD:** RECYCLED RUBBER SHEET
8MM RECYCLED RUBBER GRANULES
ENCAPSULATED IN A WEAR AND WATER
RESISTANT ELASTOMERIC NETWORK. 2 PART
EPOXY, LOCKED INTO EXTRUDED CHANNELS

PROPRIETARY AND CONFIDENTIAL: THE INFORMATION CONTAINED IN THIS DRAWING IS THE SOLE PROPERTY OF NYSTROM. ANY REPRODUCTION IN PART OR AS A WHOLE WITHOUT THE WRITTEN PERMISSION OF NYSTROM IS PROHIBITED.

| | | | | | |
|--|-----|---|---------|------------------|----------|
| PROJECT: | | | | | |
| ARCHITECT: | | | | | |
| CONTRACTOR: | | | | | |
| QTY: | | | | | |
| PART#: | | | | | |
|  9300 73rd Avenue North Brooklyn Park, MN 55428 | | TITLE: Stair Tread, Single Stage, 5 1/8" x 1/4" Ribs, Short Tip Nose, Alum Extruded Anchor | | | |
| | | NAME | DATE | SIZE | DWG. NO. |
| DRAWN | DKL | 3/6/19 | A | Nystrom STSB-C3E | A |
| RELEASED | TR | 3/6/19 | WEIGHT: | SHEET 1 OF 1 | |