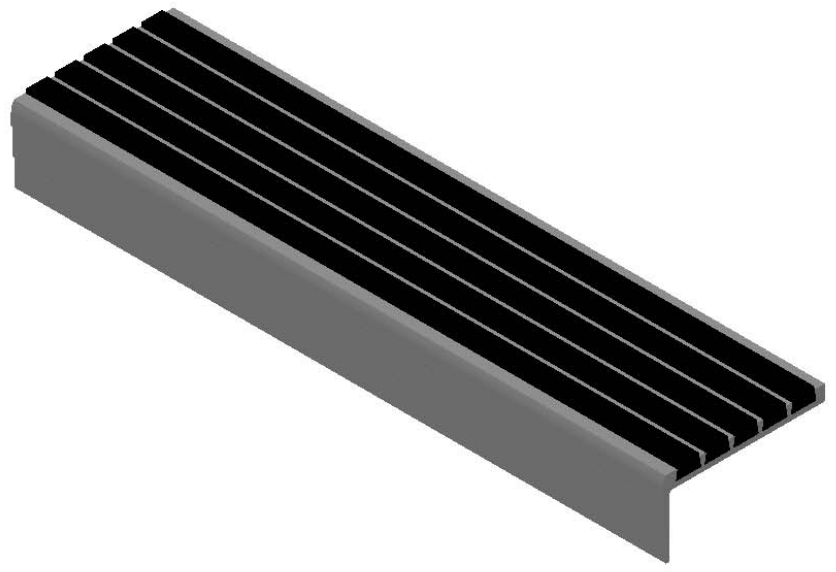


**MODEL L3D**


(SINGLE STAGE RIBBED RECYCLED RUBBER)



**SPECIFICATIONS:**

- ① **BASE:** EXTRUDED ALUMINUM ALLOY 6063 T-6
- ② **ECOTREAD:** RECYCLED RUBBER SHEET  
8MM RECYCLED RUBBER GRANULES  
ENCAPSULATED IN A WEAR AND WATER  
RESISTANT ELASTOMERIC NETWORK. 2 PART  
EPOXY, LOCKED INTO EXTRUDED CHANNELS

PROPRIETARY AND CONFIDENTIAL: THE INFORMATION CONTAINED IN THIS DRAWING IS THE SOLE PROPERTY OF NYSTROM. ANY REPRODUCTION IN PART OR AS A WHOLE WITHOUT THE WRITTEN PERMISSION OF NYSTROM IS PROHIBITED.

PROJECT:			
ARCHITECT:			
CONTRACTOR:			
QTY:			
PART#:			
 9300 73rd Avenue North Brooklyn Park, MN 55428		TITLE: Stair Tread, Single Stage, 5 Ribs Long Tip Nose	
		NAME DATE SIZE DWG. NO. REV DRAWN DKL 3/6/19 A Nystrom STSB-L3D ShpDr A RELEASED TR 3/6/19 WEIGHT: SHEET 1 OF 1	