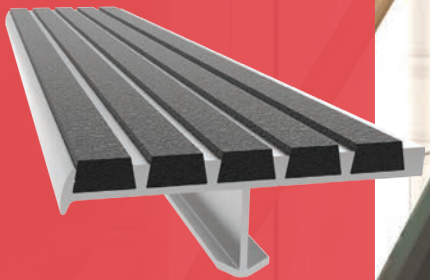




Direct Service Done Right

INTRODUCING  
EcoTread™ Stair  
Treads + Nosings

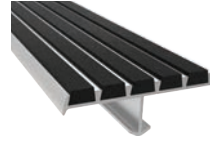


The industry's  
**ONLY** sustainable  
option! Page 6

05 5000  
Stair Treads + Nosings  
Catalog

**DIV 5**

**STAIR TREADS + NOSINGS**  
05 5000



**FALL PROTECTION**  
05 5213 / 07 7200

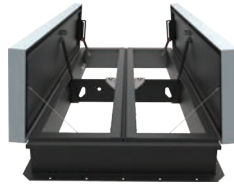


**DIV 7**

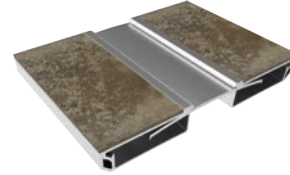
**ROOF HATCHES**  
07 7200



**SMOKE VENTS**  
07 7200



**PREFORMED JOINT SEALS + EXPANSION JOINT SYSTEMS**  
07 9100 + 07 9513



**DIV 8**

**ACCESS DOORS + PANELS**  
08 3100



**FLOOR DOORS + HATCHES**  
08 3483



**DIV 12**

**ENTRANCE MATS + FRAMES**  
**ENTRANCE FLOOR GRILLES**  
12 4813 + 12 4816



**DIV 10**

**LUMINOUS EGRESS PRODUCTS**  
10 1443



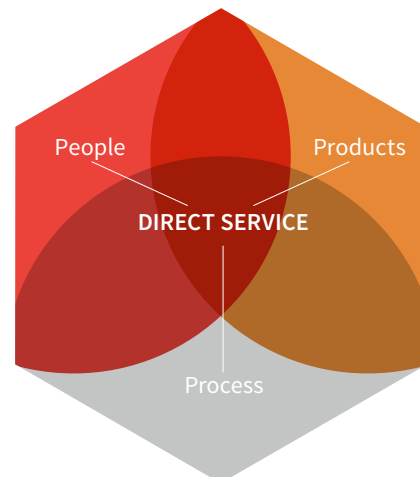
**FIRE PROTECTION CABINET + FIRE EXTINGUISHERS**  
10 4413 + 10 4416

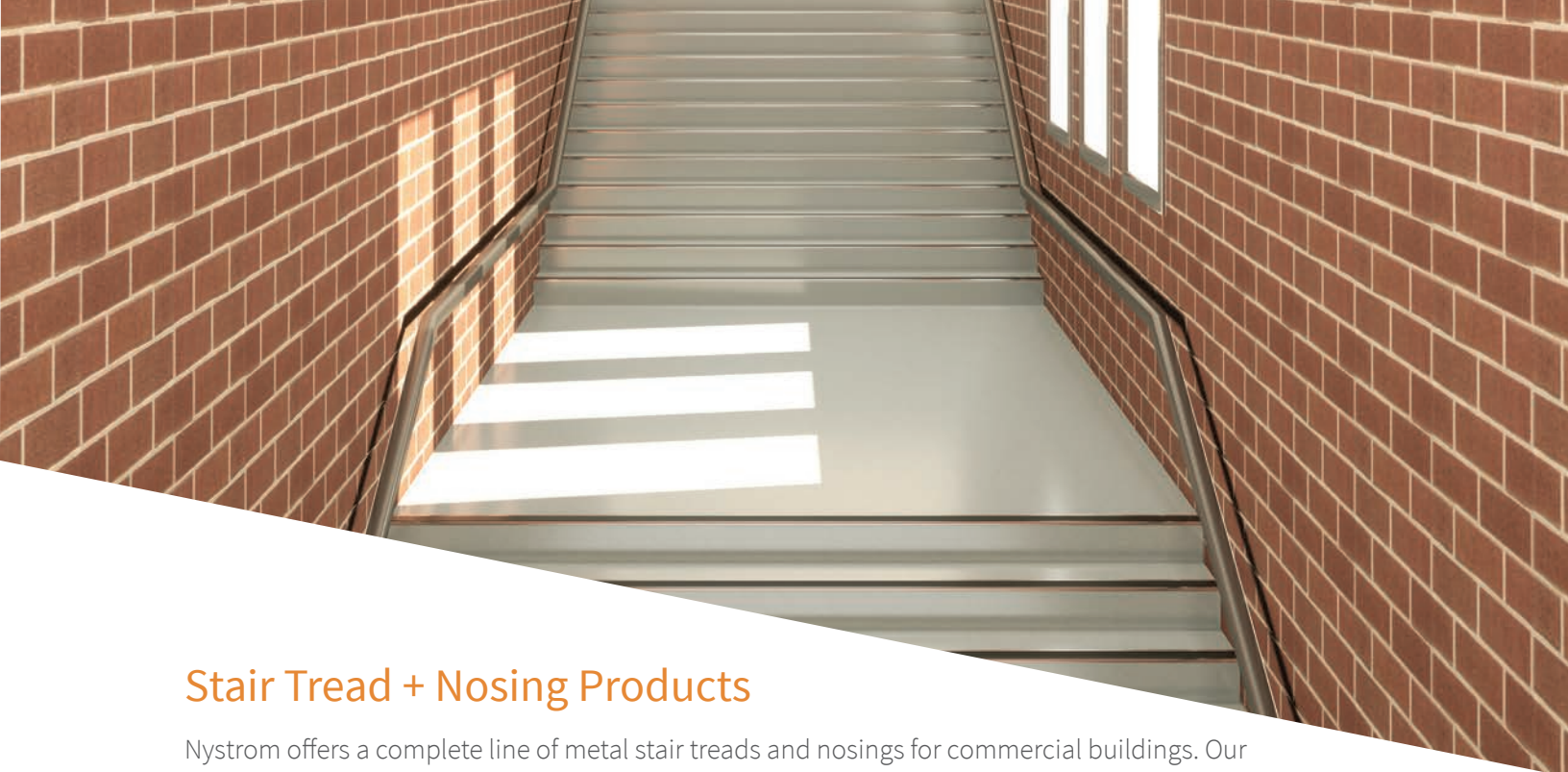


## Direct Service Done Right

Nystrom offers a broad line of specialty building products to better serve construction professionals and architects.

We have customer focused professionals and hassle-free processes that directly serve and simplify the building process.





## Stair Tread + Nosing Products

Nystrom offers a complete line of metal stair treads and nosings for commercial buildings. Our stair treads and nosings are ADA and OSHA compliant, have anti-slip abrasive grit or EcoTread™ that is suitable for interior and exterior environments and can be customized to your needs.

### **TREAD SELECTION GUIDE** **4**

### **ONLINE RESOURCES** **5**

### **ECOTREAD™** **6-7**

Introducing EcoTread™ 6

Ribbed EcoTread™ 7

### **SINGLE PART TREADS + NOSINGS** **8-10**

Ribbed Abrasive 8

Full Abrasive 9

Inset 10

### **TWO-PART TREADS + NOSINGS** **11**

Two-Part Stair Tread + Nosing 11

### **PHOTOLUMINESCENT TREADS + NOSINGS** **12-15**

Photoluminescent 12

Safe-T-Lume™, Ribbed 13

Safe-T-Lume™ Two-Part, Ribbed 14

Safe-T-Lume™ Low-Profile Renovation 15

### **RENOVATION STAIR TREADS + NOSINGS** **16**

Renovation 16

Safe-T-Lume™ Renovation 16

### **CAST TREADS + NOSINGS** **17**

Cast Aluminum 17

### **OPTIONS**

Nosing Options 18

Photoluminescent Colors 18

Abrasive Colors 18

EcoTread™ Colors 18

Material Options 19

Mounting Options 19

Custom Cuts 19

Painted Undersides 19

Repair Kits 19

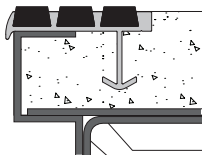
Taped Tops 19

# TREAD SELECTION GUIDE

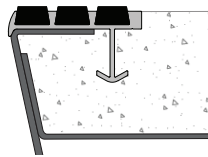
Building owners have significant risk and liability associated with slips and falls. Anti-slip stair treads help prevent pedestrian slips and falls, limiting risk and liability.

Stairways are common to many buildings and allow the occupants to move from floor to floor as they circulate the building. They also serve as a means of egress from a building and therefore their design

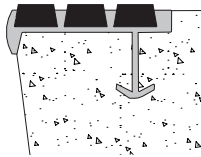
is currently regulated by building codes and standards for safety reasons. Use the illustrations and chart below to assist in selecting the right system for your application.



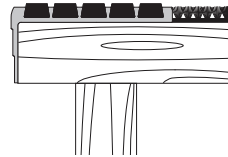
Steel Pan Stair  
Concrete filled



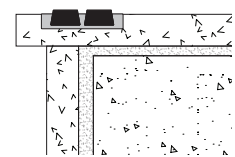
Sloped Riser Steel  
Pan Stair  
Concrete filled



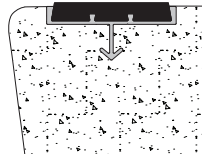
Concrete Stair



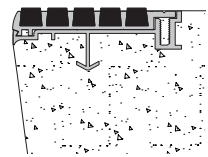
Wood Tread  
backed with carpet, tile  
or other material



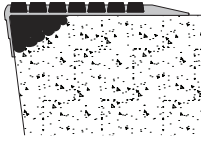
Terrazzo/Marble Tread  
rabbeted into tread



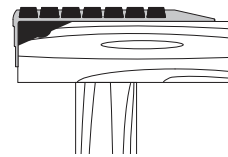
Concrete Stair  
Inset



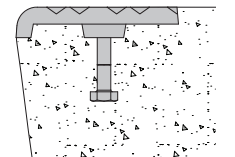
Concrete Stair  
Two-Part



Concrete Stair  
Renovation



Wood Tread  
Renovation



Concrete Stair  
Cast Aluminum/Iron

PRODUCT	PAGE	ECOTREAD	VISION LINE	STEEL PAN	POURED CONCRETE	WOOD	TERRAZZO	STONE/MARBLE	RETROFIT	INTERIOR	EXTERIOR
Ribbed EcoTread™	7	●	●	●	●	●	●			●	●
Ribbed Abrasive	8										
Mech. Fastened	-	●	●			●			●	●	●
Extruded Anchor	-	●	●	●	●					●	●
Full Abrasive	9									●	●
Mech. Fastened	-					●			●	●	●
Extruded Anchor	-			●	●					●	●
Inset	10									●	●
Mech. Fastened	-	●				●	●	●	●	●	●
Extruded Anchor	-	●		●	●					●	●
Two-Part	11									●	●
Ribbed Abrasive	-	●	●	●	●					●	●
Full Abrasive	-			●	●					●	●
Safe-T-Lume™	13									●	●
Mech. Fastened	-	●	●			●			●	●	●
Extruded Anchor	-	●	●	●	●					●	●
Safe-T-Lume™ Two-Part	14	●	●	●	●					●	●
Safe-T-Lume™ Low-Profile Renovation	15			●	●	●	●	●	●	●	●
Renovation	16	●	●	●	●	●			●	●	●
Cast	17			●	●					●	●



# ONLINE RESOURCES

Comprehensive product documentation is available online 24/7. You'll find all the essential resources to support your project needs at [nystrom.com/products/stairnosings](http://nystrom.com/products/stairnosings)

Sign In Account Shopping Lists Cart (0) Checkout

**nystrom** 1.800.547.2635 Product Search

PRODUCTS RESOURCES ABOUT CONTACT US BUY ONLINE

Home > Products > Stair Treads + Nosings > Ribbed Bar Nosing

### Ribbed Bar Nosing with EcoTread™

Economical and easy to install, Nystrom Ribbed Bar Abrasive Nosing is designed for stairs and is perfect for indoor and outdoor poured concrete stair applications where extra safety is desired or required by code. The ribbed abrasive grit or EcoTread™ can be customized for multi-color treads.

**Features**

- Anti-Slip Safety
- Continuous Color
- Optional Vision Line
- 14 Color Options
- Title 24 Compliant\*

\*Title 24 Compliant/Vision Impairment requires 2 inches of a contrasting color at the edge of the stair indicating a change of plane.

Specifications Videos Order Guide Options

Specifications	STSB
Channel	Extruded Aluminum
Application	Concrete Poured, Steel Pan, Terrazzo or Wood
Tread	Ribbed Bar Abrasive or EcoTread
Width	1-7/8", 3" or 4"
Mounting	Extruded Anchor or Drilled Holes
Nosing	Short, Short-Tipped, Long, or Angled
Compliance	California Title 24, Section 3306
Colors	<ul style="list-style-type: none"> <li>• Abrasive Grit: Black, Yellow, Photoluminescent, Gray, Brown, Burgundy, Green, Blue, Red or Buff (Orange)</li> <li>• EcoTread: Black, Safety Yellow, Blue, Gray</li> </ul>
Options	Vision Line, Abrasive Colors, Mitered Cuts, Painted Undersides, and Taped Tops
Warranty	1 Year

+ Documents (Scroll down to see more)

Description	Model	Shop Drawing	CAD	Revit/BIM	Data Sheet	3-Part Specs	LEED	Installation	Warranty
<b>Abrasive Grit</b>									
1-7/8" Width, Short Nose	STSB-C1.875D	<a href="#">PDF</a>	<a href="#">DWG</a>	<a href="#">LINK</a>	<a href="#">PDF</a>	<a href="#">WORD</a>	<a href="#">PDF</a>	<a href="#">PDF</a>	<a href="#">PDF</a>
3" Width, Short Nose	STSB-C3D	<a href="#">PDF</a>	<a href="#">DWG</a>	<a href="#">LINK</a>	<a href="#">PDF</a>	<a href="#">WORD</a>	<a href="#">PDF</a>	<a href="#">PDF</a>	<a href="#">PDF</a>
4" Width, Short Nose	STSB-C4D	<a href="#">PDF</a>	<a href="#">DWG</a>	<a href="#">LINK</a>	<a href="#">PDF</a>	<a href="#">WORD</a>	<a href="#">PDF</a>	<a href="#">PDF</a>	<a href="#">PDF</a>
1-7/8" Width, Long Nose	STSB-L-C1.875D	<a href="#">PDF</a>	<a href="#">DWG</a>	<a href="#">LINK</a>	<a href="#">PDF</a>	<a href="#">WORD</a>	<a href="#">PDF</a>	<a href="#">PDF</a>	<a href="#">PDF</a>
3" Width, Long Nose	STSB-L3D	<a href="#">PDF</a>	<a href="#">DWG</a>	<a href="#">LINK</a>	<a href="#">PDF</a>	<a href="#">WORD</a>	<a href="#">PDF</a>	<a href="#">PDF</a>	<a href="#">PDF</a>

## SHOP DRAWINGS



## CAD DRAWINGS



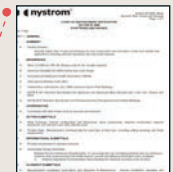
## REVIT/BIM FILES



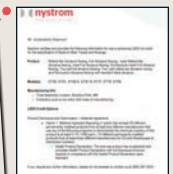
## DATA SHEETS



## 3-PART-SPECS



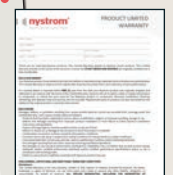
## LEED



## INSTALLATION



## WARRANTY



**NEW**

# EcoTread™

## STAIR TREADS + NOSINGS

*Sustainability, one step at a time.*

The EcoTread™ Stair Nosings offer a sustainable and ecofriendly material option. An industry first, these treads are engineered with recycled aluminum and rubber. Multiple tread options provide a variety of coordinating color options that are perfect for both interior and exterior use.

**FADE + WEAR RESISTANT**  
A durable product that will stand up to weather extremes and foot traffic.

**RECYCLED + RECYCLABLE**  
These sustainable treads are made from 90%† recycled rubber and the entire system is 100% recyclable.

**EASILY REPLACEABLE**  
Should a tread get damaged, replacement insert installation is quick and easy.

**EASY TO CLEAN + MAINTAIN**  
These stain and chemical resistant treads are coated with a water-based protectant.

**CONTEMPORARY COLOR CHOICES**  
Choose from 4 EcoTread color options to complement your building aesthetics.

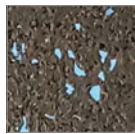
### COLOR OPTIONS



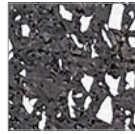
Black<sup>†</sup> 90%



Safety Yellow 5%



Blue 84%



Gray 84%

*Colors shown give only an indication of shade. Samples are available upon request. †90% recycled rubber available in Black EcoTread only. All other recycled content noted by color swatches.*

### ECOTREAD OPTION AVAILABLE IN

Ribbed	page 7
Inset Ribbed	page 10
Two-Part	page 11, 14
Safe-T-Lume™	page 13
Renovation	page 16

# Ribbed EcoTread™

## STAIR TREAD + NOSING



STSB-P3E-ECO shown

The single-part Ribbed EcoTread™ Stair Tread and Nosing is the industry's first sustainable and eco-friendly nosing. This nosing is engineered with recycled aluminum and rubber, is available in multiple color options and can be used in both interior and exterior applications.

### FEATURES

**RECYCLED + RECYCLABLE** These sustainable treads are made from up to 90% recycled rubber and the entire system is 100% recyclable.

**FADE + WEAR RESISTANT** A durable product that will stand up to weather extremes and foot traffic.

**EASY TO CLEAN + MAINTAIN** These stain and chemical resistant treads are coated with a water-based protectant.

### DETAILS

**CHANNEL** Extruded Aluminum

**APPLICATION** Poured Concrete, Steel Pan, Terrazzo or Wood

**TREAD** Ribbed EcoTread™

**WIDTH** 1-7/8, 3 or 4 inches

**LENGTH** Up to 12 linear feet

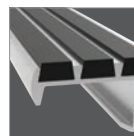
**MOUNTING** Anchor or Drilled Hole, Mech. Fastened

**NOSING** Short, Short-Tipped, Long or Angled

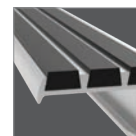
**OPTIONS** Vision Line, Mitered Cuts, Painted Undersides or Taped Tops

**CODE COMPLIANCE** 2010 ADA 504, 2015 IBC/ICC Section 1029.13.2, 2018 IBC/ICC Section 1029.14.2, and 2016 California Building Code Section 11B-504.5

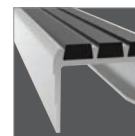
### NOSING



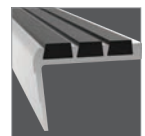
Short



Short-Tipped

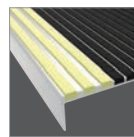


Long

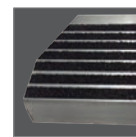


Angled Long

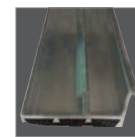
### OPTIONS



Vision Line



Mitered Cuts



Painted Undersides



Taped Tops

### ORDER GUIDE

MODEL	WIDTH	NOSING	INSTALL
STSB-C1.875E-ECO	1-7/8"	Short	Cast-In, Extruded Anchor
STSB-C1.875D-ECO	1-7/8"	Short	Drilled Hole, Mech. Fastened
STSB-P1.875E-ECO	1-7/8"	Short-Tipped	Cast-In, Extruded Anchor
STSB-P1.875D-ECO	1-7/8"	Short-Tipped	Drilled Hole, Mech. Fastened
STSB-L1.875E-ECO	1-7/8"	Long	Cast-In, Extruded Anchor
STSB-L1.875D-ECO	1-7/8"	Long	Drilled Hole, Mech. Fastened
STSB-A1.875D-ECO	1-7/8"	Angled-Long	Drilled Hole, Mech. Fastened
STSB-C3E-ECO	3"	Short	Cast-In, Extruded Anchor
STSB-C3D-ECO	3"	Short	Drilled Hole, Mech. Fastened

### ECOTREAD™ ORDER GUIDE

MODEL	WIDTH	NOSING	INSTALL
STSB-P3E-ECO	3"	Short-Tipped	Cast-In, Extruded Anchor
STSB-P3D-ECO	3"	Short-Tipped	Drilled Hole, Mech. Fastened
STSB-L3E-ECO	3"	Long	Cast-In, Extruded Anchor
STSB-L3D-ECO	3"	Long	Drilled Hole, Mech. Fastened
STSB-A3E-ECO	3"	Angled-Long	Cast-In, Extruded Anchor
STSB-A3D-ECO	3"	Angled-Long	Drilled Hole, Mech. Fastened
STSB-C4E-ECO	4"	Short	Cast-In, Extruded Anchor
STSB-C4D-ECO	4"	Short	Drilled Hole, Mech. Fastened
STSB-P4E-ECO	4"	Short-Tipped	Cast-In, Extruded Anchor
STSB-P4D-ECO	4"	Short-Tipped	Drilled Hole, Mech. Fastened

# Ribbed Abrasive

## STAIR TREAD + NOSING

This Ribbed Abrasive Stair Tread and Nosing is the industry's most popular choice. This nosing is economical, easy to install, and perfect for indoor and outdoor applications where extra safety is desired or required by code.

### FEATURES

**OPTIONAL VISION LINE** Customize your tread with rows of different colors. Easily mark a safe egress with UL listed photoluminescent or safety yellow fill.

**CONTINUOUS COLOR** No need to worry about walking off the color as the abrasive material filler is dyed throughout.

**QUICK SHIP OPTION\*** The short-tipped nose, *model STSB-P3E*, is now available with a quick ship option in stock lengths of 4 and 6 linear feet.



### DETAILS

**CHANNEL** Extruded Aluminum

**APPLICATION** Poured Concrete, Steel Pan, Terrazzo or Wood

**TREAD** Ribbed Abrasive

**WIDTH** 1-7/8", 3 or 4 inches

**LENGTH** Up to 12 linear feet

**MOUNTING** Anchor or Drilled Hole, Mech. Fastened

**NOSING** Short, Short-Tipped, Long or Angled

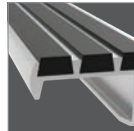
**OPTIONS** Photoluminescent, Vision Line, Mitered Cuts, Painted Undersides or Taped Tops

**CODE COMPLIANCE** 2010 ADA 504, 2015 IBC/ICC Section 1029.13.2, 2018 IBC/ICC Section 1029.14.2, and 2016 California Building Code Section 11B-504.5

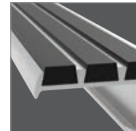
### ORDER GUIDE

MODEL	WIDTH	NOSING	INSTALL
STSB-C1.875E	1-7/8"	Short	Cast-In, Extruded Anchor
STSB-C1.875D	1-7/8"	Short	Drilled Hole, Mech. Fastened
STSB-P1.875E	1-7/8"	Short-Tipped	Cast-In, Extruded Anchor
STSB-P1.875D	1-7/8"	Short-Tipped	Drilled Hole, Mech. Fastened
STSB-L1.875E	1-7/8"	Long	Cast-In, Extruded Anchor
STSB-L1.875D	1-7/8"	Long	Drilled Hole, Mech. Fastened
STSB-A1.875D	1-7/8"	Angled-Long	Drilled Hole, Mech. Fastened
STSB-C3E	3"	Short	Cast-In, Extruded Anchor
STSB-C3D	3"	Short	Drilled Hole, Mech. Fastened

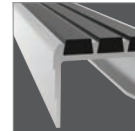
### NOSING



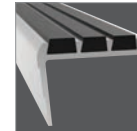
Short



Short-Tipped

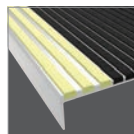


Long

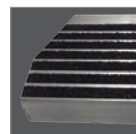


Angled Long

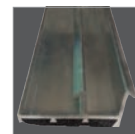
### OPTIONS



Vision Line



Mitered Cuts



Painted Undersides



Taped Tops

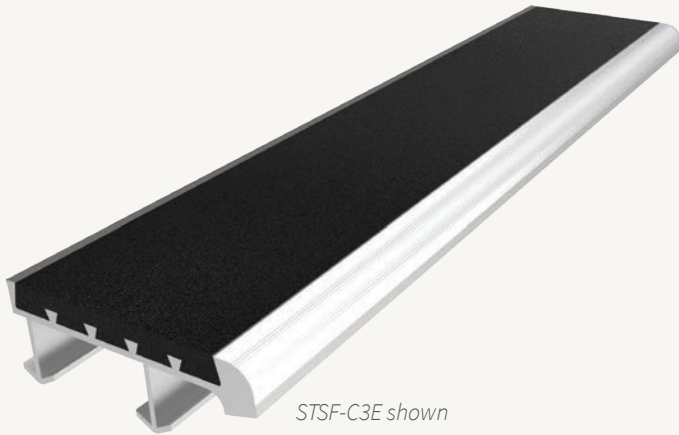
MODEL	WIDTH	NOSING	INSTALL
STSB-P3E*	3"	Short-Tipped	Cast-In, Extruded Anchor
STSB-P3D	3"	Short-Tipped	Drilled Hole, Mech. Fastened
STSB-L3E	3"	Long	Cast-In, Extruded Anchor
STSB-L3D	3"	Long	Drilled Hole, Mech. Fastened
STSB-A3E	3"	Angled-Long	Cast-In, Extruded Anchor
STSB-A3D	3"	Angled-Long	Drilled Hole, Mech. Fastened
STSB-C4E	4"	Short	Cast-In, Extruded Anchor
STSB-C4D	4"	Short	Drilled Hole, Mech. Fastened
STSB-P4E	4"	Short-Tipped	Cast-In, Extruded Anchor
STSB-P4D	4"	Short-Tipped	Drilled Hole, Mech. Fastened

\*Quick Ship Option now available in stock lengths of 4 and 6 linear feet.



# Full Abrasive

## STAIR TREAD + NOSING



STSF-C3E shown

The redesigned Full Abrasive Stair Tread and Nosing is made from an extruded aluminum base with abrasive material locked into the channel. The material is consistent throughout the tread and features a new durable, serrated aluminum nose. Ideal for indoor and outdoor applications.

### FEATURES

**SERRATED NOSE** The redesigned tread features a solid, serrated aluminum nose for protection and added slip resistance.

**ANTI-SLIP SAFETY TREADS** Reduce slip hazards with ADA and OSHA compliant abrasive stair treads. Abrasive treads provide a high level of slip resistance.

**CONTINUOUS COLOR** No need to worry about walking off the color as the abrasive material filler is dyed throughout.

### DETAILS

**CHANNEL** Extruded Aluminum

**APPLICATION** Poured Concrete, Steel Pan, Terrazzo or Wood

**TREAD** Full Abrasive

**WIDTH** 2, 3, or 4 inches

**LENGTH** Up to 12 linear feet

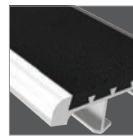
**MOUNTING** Anchor or Drilled Hole, Mech. Fastened

**NOSING** Short, Short-Tipped or Long

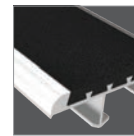
**OPTIONS** Photoluminescent, Mitered Cuts, Painted Undersides or Taped Tops

**CODE COMPLIANCE** 2010 ADA 504, 2015 IBC/ICC Section 1029.13.2, 2018 IBC/ICC Section 1029.14.2, and 2016 California Building Code Section 11B-504.4.1 and 11B-504.5

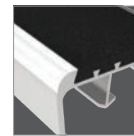
### NOSING



Short

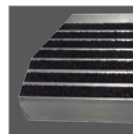


Short-Tipped

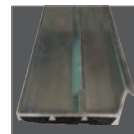


Long

### OPTIONS



Mitered Cuts



Painted Undersides



Taped Tops

### ORDER GUIDE

SHORT NOSE MODELS	WIDTH	INSTALL	LONG NOSE MODELS	WIDTH	INSTALL	SHORT-TIPPED NOSE MODELS	WIDTH	INSTALL
STSF-C2E	2"	Cast-In, Extruded Anchor	STSF-L2E	2"	Cast-In, Extruded Anchor	STSF-P2E	2"	Cast-In, Extruded Anchor
STSF-C2D	2"	Drilled Hole, Mech. Fastened	STSF-L2D	2"	Drilled Hole, Mech. Fastened	STSF-P2D	2"	Drilled Hole, Mech. Fastened
STSF-C3E	3"	Cast-In, Extruded Anchor	STSF-L3E	3"	Cast-In, Extruded Anchor	STSF-P3E	3"	Cast-In, Extruded Anchor
STSF-C3D	3"	Drilled Hole, Mech. Fastened	STSF-L3D	3"	Drilled Hole, Mech. Fastened	STSF-P3D	3"	Drilled Hole, Mech. Fastened
STSF-C4E	4"	Cast-In, Extruded Anchor	STSF-L4E	4"	Cast-In, Extruded Anchor	STSF-P4E	4"	Cast-In, Extruded Anchor
STSF-C4D	4"	Drilled Hole, Mech. Fastened	STSF-L4D	4"	Drilled Hole, Mech. Fastened	STSF-P4D	4"	Drilled Hole, Mech. Fastened

# Inset

## STAIR TREAD + NOSING

Inset Treads and Nosings are an ideal solution for walkways, ramps, landings and stair treads that require a strip of anti-slip abrasive material. The inset treads are available in bar or full abrasive.

### FEATURES

**RAMPS & WALKWAYS** Inset treads and nosings are the ideal solution for providing an anti-slip surface. Install on ramps, walkways, platforms and stairs on most surfaces.

**ANTI-SLIP SAFETY TREADS** Reduce slip hazards with ADA and OSHA compliant, non-combustible, abrasive stair treads. Abrasive treads provide a high level of slip resistance.

**CONTINUOUS COLOR** No need to worry about walking off the color as the abrasive material filler is dyed throughout.



STSF-N2.25E shown

### DETAILS

**CHANNEL** Extruded Aluminum

**APPLICATION** Marble/Stone, Poured Concrete, Steel Pan, Terrazzo or Wood

#### TREAD

- STSB: Ribbed Abrasive or EcoTread
- STSF: Full Abrasive

**WIDTH** 1-3/8", 2-1/4" or 3 inches

**LENGTH** Up to 12 linear feet

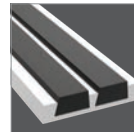
**MOUNTING** Anchor or Drilled Hole, Mech. Fastened

**NOSING** None

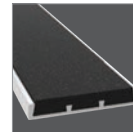
**OPTIONS** Photoluminescent, Mitered Cuts, Painted Undersides or Taped Tops

**CODE COMPLIANCE** 2010 ADA 504, 2015 IBC/ICC Section 1029.13.2, 2018 IBC/ICC Section 1029.14.2, and 2016 California Building Code Section 11B-504.4.1 (STSF-N2.25 only) and 11B-504.5

### TREAD

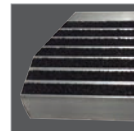


Ribbed Abrasive

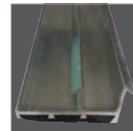


Full Abrasive

### OPTIONS



Mitered Cuts



Painted Undersides



Taped Tops

### ORDER GUIDE

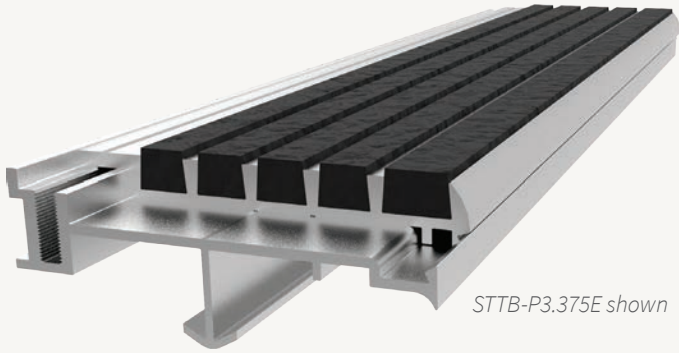
RIBBED ABRASIVE MODELS	WIDTH	TREAD	INSTALL
STSB-N1.375D	1-3/8"	Abrasive Grit	Drilled Hole, Mech. Fastened
STSB-N1.375E	1-3/8"		Cast-In, Extruded Anchor
STSB-N3D	3"		Drilled Hole, Mech. Fastened
STSB-N3E	3"		Cast-In, Extruded Anchor
STSB-N1.375D-ECO	1-3/8"	EcoTread™	Drilled Hole, Mech. Fastened
STSB-N1.375E-ECO	1-3/8"		Cast-In, Extruded Anchor
STSB-N3D-ECO	3"		Drilled Hole, Mech. Fastened
STSB-N3E-ECO	3"		Cast-In, Extruded Anchor

FULL ABRASIVE MODELS	WIDTH	INSTALL
STSF-N2.25D	2-1/4"	Drilled Hole, Mech. Fastened
STSF-N2.25E	2-1/4"	Cast-In, Extruded Anchor

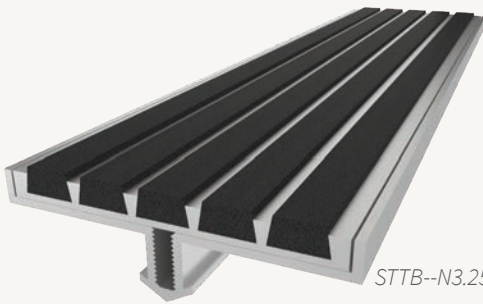
Safe-T-Lume™ Inset Models  
Also Available – See Page 13

# Two-Part

## STAIR TREADS + NOSINGS



STTB-P3.375E shown



STTB-N3.25E shown

Two-Part Stair Treads and Nosings are designed to save your nosings from damage during the construction process. The sub-channel and plywood inserts are installed during the construction phase. When the building is near completion, the temporary plywood tread is replaced with the abrasive or EcoTread™ anti-slip safety tread top.

### FEATURES

**EASY TREAD REPLACEMENT** Easily replace worn or damaged treads by unscrewing the existing tread, slide the new one in and fasten to the base.

**CONTINUOUS COLOR** No need to worry about walking off the color as the abrasive material filler is dyed throughout.

### DETAILS

**CHANNEL** Extruded Aluminum

**APPLICATION** Poured Concrete, or Steel Pan

**TREAD** STTB: Ribbed Abrasive  
STTF: Full Abrasive  
STTB-N: Ribbed Abrasive or EcoTread

**WIDTH** 3-<sup>3</sup>/<sub>8</sub> Inches or 3-<sup>1</sup>/<sub>4</sub> Inches

**LENGTH** Up to 12 linear feet

**MOUNTING** Anchor

**NOSING** Short-Tipped, None

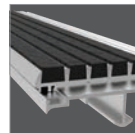
**OPTIONS** Photoluminescent, Vision Line, Mitered Cuts, Painted Undersides or Taped Tops

**CODE COMPLIANCE** 2010 ADA 504, 2015 IBC/ICC Section 1029.13.2, 2018 IBC/ICC Section 1029.14.2, and 2016 California Building Code Section 11B-504.4.1 (STTF-3.375E only) and 11B-504.5

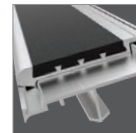
### ORDER GUIDE

MODEL	WIDTH	NOSING	TREAD	INSTALL
STTB-P3.375E	3- <sup>3</sup> / <sub>8</sub> "	Short-Tipped	Ribbed Abrasive	Extruded Anchor
STTF-P3.375E	3- <sup>3</sup> / <sub>8</sub> "	Short-Tipped	Full Abrasive	Extruded Anchor
STTB-N3.25E	3- <sup>1</sup> / <sub>4</sub> "	None	Ribbed Abrasive	Extruded Anchor
STTB-N3.25E-ECO	3- <sup>1</sup> / <sub>4</sub> "	None	Ribbed EcoTread™	Extruded Anchor

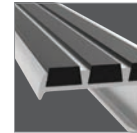
### TREAD



Ribbed Abrasive



Full Abrasive

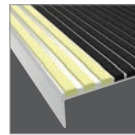


Short-Tipped (P)

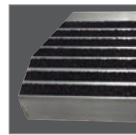


No Nose Inset (N)

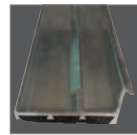
### OPTIONS



Vision Line



Mitered Cuts



Painted Undersides



Taped Tops

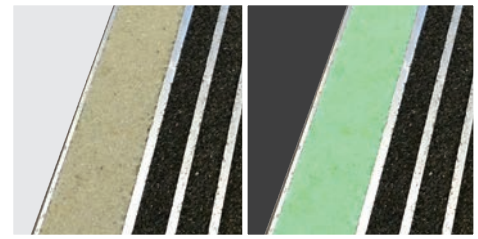
# Photoluminescent

## STAIR TREAD + NOSING

Photoluminescent (glow-in-the-dark) stair treads and nosings are designed to keep building occupants safe while exiting the building in an emergency. The stair treads and nosings create an anti-slip surface that illuminates the stair nosing to identify a change in level.

All photoluminescent treads require exposure from UV or natural daylight to properly charge the photoluminescent material.

Photoluminescent options are available in the following systems:

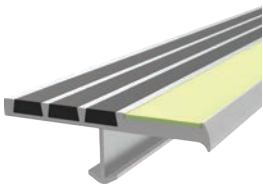


Charging State

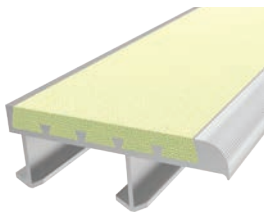
Glow State



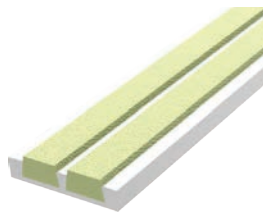
UL listed luminous egress-path marking system SA33914



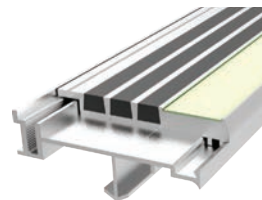
Ribbed Bar Abrasive  
pg. 8 & 13



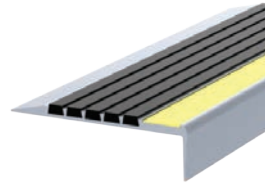
Full Abrasive  
pg. 9



Inset  
pg. 10 & 13



Two-Part  
pg. 11 & 14



Renovation  
pg. 15 & 16

## Now Offering Luminous Egress Products

Nystrom offers a full egress stairway solution with coordinating luminous egress products and stair treads and nosings.

- Complete Product Line
- AIA CEU Course
- Code Resource





# Safe-T-Lume™

## STAIR TREAD + NOSING



STSM-P3E shown



Safe-T-Lume™ Ribbed Bar Abrasive Stair Treads are an industry leading glow-in-the-dark option. These treads are perfect for indoor and outdoor applications such as stadiums and parking garages.

### FEATURES

**BRIGHTNESS** The embedded glow-in-the-dark photoluminescent material provides needed illumination for a safe exit. Choose between an embedded resin strip with superior glow or abrasive grit strip that exceeds code requirements.

**DURABILITY** The stair treads and nosings are long-lasting. They are designed with materials that last, like extruded aluminum, abrasive grit and EcoTread™.

**INSTALLATION EASE** Installation and maintenance manuals are available at [nystrom.com](http://nystrom.com).

### DETAILS

**MATERIAL** Extruded Aluminum, Abrasive Grit or EcoTread™, and 53 mil Resin or 21 mil Abrasive Grit Insert

**COLOR** Photoluminescent strip and optional tread colors

**APPLICATION** Poured Concrete, Steel Pan, or Wood

**TREAD** Ribbed Abrasive or EcoTread

**WIDTH** 3 inches

**LENGTH** Up to 12 linear feet

**MOUNTING** Anchor or Drilled Hole, Mech. Fastened

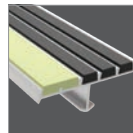
**NOSING** Short-Tipped, None

**OPTIONS** Mitered Cuts, Painted Undersides or Taped Tops

**CODE COMPLIANCE** 2015/2018 IBC Section 1025, 2015/2018 IFC Section 1025

**TEST STANDARD** ASTM 2072, UL 1994

### NOSING



Short-Tipped (P)

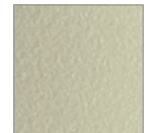


None (N)

### INSERT

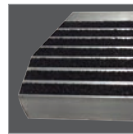


Resin Strip

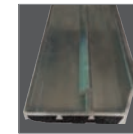


Abrasive Grit Strip (T)

### OPTIONS



Painted Undersides



Painted Undersides



Taped Tops

### ORDER GUIDE

MODEL	WIDTH	NOSING	INSERT	INSTALL
STSM-P3E	3"	Short-Tipped	Resin Strip	Cast-In, Extruded Anchor
STSM-P3D	3"		Drilled Hole, Mech. Fastened	
STSM-P3E-T	3"		Abrasive Grit Strip	Cast-In, Extruded Anchor
STSM-P3D-T	3"		Drilled Hole, Mech. Fastened	
STSM-N3E	3"	None	Resin Strip	Cast-In, Extruded Anchor
STSM-N3D	3"		Drilled Hole, Mech. Fastened	
STSM-N3E-T	3"		Abrasive Grit Strip	Cast-In, Extruded Anchor
STSM-N3D-T	3"		Drilled Hole, Mech. Fastened	

\*Stair Nosing Guards™ available on 3" short-tipped (P3) nosings only.

ECOTREAD™ MODELS	WIDTH	NOSING	TREAD/INSERT	INSTALL
STSM-P3E-ECO	3"	Short-Tipped	EcoTread™ and Resin Strip	Cast-In, Extruded Anchor
STSM-P3D-ECO	3"		Drilled Hole, Mech. Fastened	
STSM-P3E-T-ECO	3"		EcoTread™ and Abrasive Grit Strip	Cast-In, Extruded Anchor
STSM-P3D-T-ECO	3"		Drilled Hole, Mech. Fastened	
STSM-N3E-ECO	3"	None	EcoTread™ and Resin Strip	Cast-In, Extruded Anchor
STSM-N3D-ECO	3"		Drilled Hole, Mech. Fastened	
STSM-N3E-T-ECO	3"		EcoTread™ and Abrasive Grit Strip	Cast-In, Extruded Anchor
STSM-N3D-T-ECO	3"		Drilled Hole, Mech. Fastened	

# Safe-T-Lume™

## TWO-PART STAIR TREAD + NOSING

The Safe-T-Lume™ is a two-part system allows for quick and easy damage replacement. The 1 inch wide front rib provides a continuous photoluminescent stripe that will glow-in-the-dark when activated.

### FEATURES

**BRIGHTNESS** The embedded glow-in-the-dark photoluminescent material provides needed illumination for a safe exit. Choose between an embedded resin strip with superior glow or abrasive grit strip that exceeds code requirements.

**DURABILITY** The stair treads and nosings are long-lasting. They are designed with materials that last, like extruded aluminum, abrasive grit and EcoTread™.

**INSTALLATION EASE** Easily replace damaged or worn treads by installing new inserts. Installation and maintenance manuals are available at [nystrom.com](http://nystrom.com).



STTM-P3.375E shown



### DETAILS

**MATERIAL** Extruded Aluminum, Abrasive Grit or EcoTread™, and 53 mil Resin or 21 mil Abrasive Grit Insert

**COLOR** Photoluminescent strip and optional tread colors

**APPLICATION** Poured Concrete or Steel Pan

**TREAD** Ribbed Abrasive or EcoTread

**WIDTH** 3-3/8 inches

**LENGTH** Up to 12 linear feet

**MOUNTING** Anchor

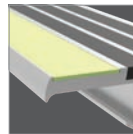
**NOSING** Short-Tipped

**OPTIONS** Mitered Cuts, Painted Undersides or Taped Tops

**CODE COMPLIANCE** 2015/2018 IBC Section 1025, 2015/2018 IFC Section 1025

**TEST STANDARD** ASTM 2072, UL 1994

### NOSING



Short-Tipped

### INSERT

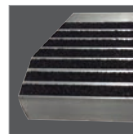


Resin Strip

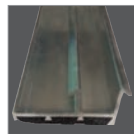


Abrasive Grit Strip

### OPTIONS



Mitered Cuts



Painted Undersides



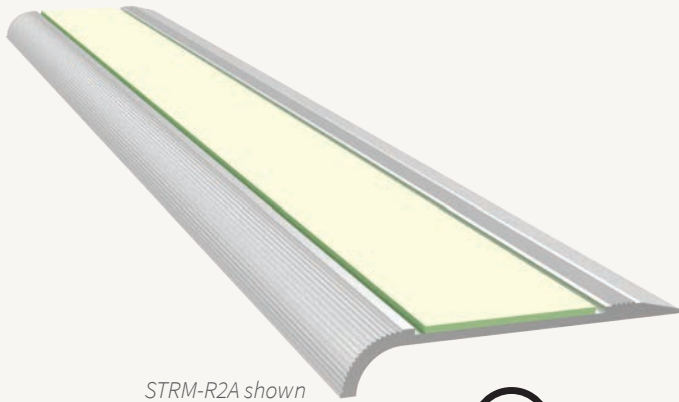
Taped Tops

### ORDER GUIDE

MODEL	WIDTH	INSERT	ECOTREAD™ MODELS	WIDTH	TREAD/INSERT
STTM-P3.375E	3-3/8"	Resin Strip	STTM-P3.375E-ECO	3-3/8"	EcoTread™ and Resin Strip
STTM-P3.375E-T	3-3/8"	Abrasive Grit Strip	STTM-P3.375E-T-ECO	3-3/8"	EcoTread™ and Abrasive Grit Strip

# Safe-T-Lume™

## LOW-PROFILE RENOVATION STAIR TREADS + NOSINGS



STRM-R2A shown



Economical and easy to install, Safe-T-Lume™ Low-Profile Renovation Stair Treads and Nosings are designed for existing stairways, including: concrete, carpet, tile, checker plated steps, aluminum steps and more.

### FEATURES

**BRIGHTNESS** The embedded glow-in-the-dark photoluminescent material provides needed illumination for a safe exit. Choose between an embedded resin strip with superior glow or abrasive grit strip that exceeds code requirements.

**DURABILITY** The stair treads and nosings are long-lasting. They are designed with materials that last, like extruded aluminum and abrasive grit.

**INSTALLATION EASE** Easily replace damaged or worn treads by installing new inserts. Installation and maintenance manuals are available at [nystrom.com](http://nystrom.com).

### DETAILS

**MATERIAL** Extruded Aluminum with an embedded 53 mil resin strip or 21 mil abrasive grit insert

**TREAD** Serrated

**WIDTH** 2 inches

**LENGTH** Up to 12 linear feet

**MOUNTING** Adhesive (*supplied by others*)

**NOSING** Rounded

**OPTIONS** Mitered Cuts, Painted Undersides or Taped Tops

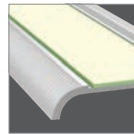
**CODE COMPLIANCE** 2015/2018 IBC Section 1025, 2015/2018 IFC Section 1025

**TEST STANDARD** ASTM 2072, UL 1994

### ORDER GUIDE

MODEL	WIDTH	INSERT	INSTALL
STRM-R2A	2"	Resin Strip	Adhesive
STRM-R2A-T	2"	Abrasive Grit Strip	Adhesive

### NOSING



Rounded

### INSERT

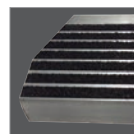


Resin Strip

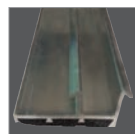


Abrasive Grit Strip

### OPTIONS



Mitered Cuts



Painted Undersides



Taped Tops

# Renovation

## STAIR TREAD + NOSING

Give your tired stairs a face lift...

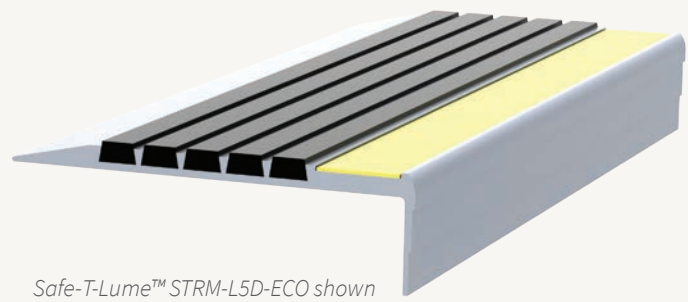
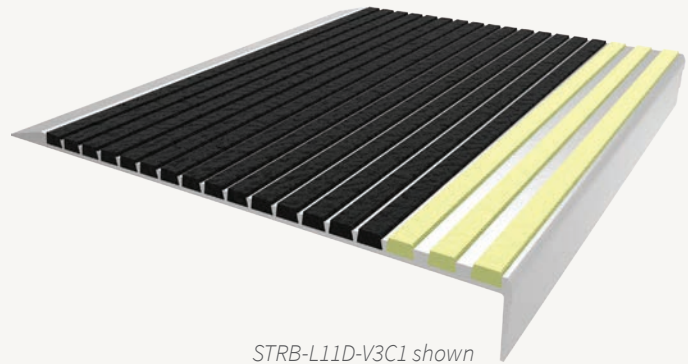
Manufactured with the same material as our bar and full abrasive nosings, Renovation Treads are designed for restoration of all stair types. The Renovation stair treads are a quick and economical alternative to new construction and provide a safe, non-slip surface.

### FEATURES

**LARGEST TREAD SURFACE** Designed to cover more of your stair, these tread surfaces cover up to 11" providing ultimate anti-slip safety and protection.

**BRIGHTNESS** The embedded glow-in-the-dark photoluminescent material provides needed illumination for a safe exit. Choose between an embedded resin strip with superior glow or abrasive grit strip that exceeds code requirements.

**CONTINUOUS COLOR** No need to worry about walking off the color as the abrasive material filler is dyed throughout.



### DETAILS

**MATERIAL** Extruded Aluminum, Abrasive Grit or EcoTread™, and 53 mil Resin or 21 mil Abrasive Grit Insert

**CHANNEL** Extruded Aluminum

**APPLICATION** Poured Concrete, Sloped, Steel Pan, or Wood

**TREAD** Ribbed Abrasive or EcoTread™

**WIDTH** 4, 5, 9 or 11 Inches

**LENGTH** Up to 12 linear feet

**MOUNTING** Drilled Hole, Mech. Fastened

**NOSING** Rounded, Long or Angled-Long

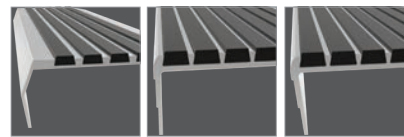
**OPTIONS** Photoluminescent, Vision Line, Mitered Cuts, Painted Undersides or Taped Tops

**CODE COMPLIANCE** 2010 ADA 504, 2015 IBC/ICC Section 1029.13.2, 2018 IBC/ICC Section 1029.14.2, and 2016 California Building Code Section 11B-504.5

### ORDER GUIDE

MODEL	WIDTH	NOSING	TREAD/INSERT
STRB-V4D	4"	Rounded	Abrasive Grit Tread Only
STRB-L5D	5"	Long	Abrasive Grit Tread Only
STRB-L9D	9"	Long	Abrasive Grit Tread Only
STRB-L11D	11"	Long	Abrasive Grit Tread Only
STRB-A5D	5"	Angled Long	Abrasive Grit Tread Only
STRB-A9D	9"	Angled Long	Abrasive Grit Tread Only
STRB-A11D	11"	Angled Long	Abrasive Grit Tread Only
STRM-L5D	5"	Long	Abrasive Grit and Resin Strip
STRM-L5D-T	5"	Long	Abrasive Grit and Abrasive Grit Strip
STRM-A5D	5"	Angled Long	Abrasive Grit and Resin Strip
STRM-A5D-T	5"	Angled Long	Abrasive Grit and Abrasive Grit Strip

### NOSING



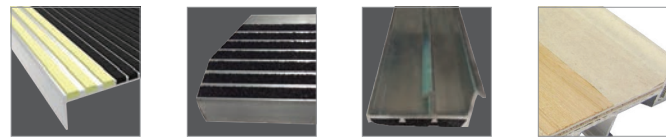
Rounded Long Angled-Long

### INSERT



Resin Strip Abrasive Grit Strip

### OPTIONS



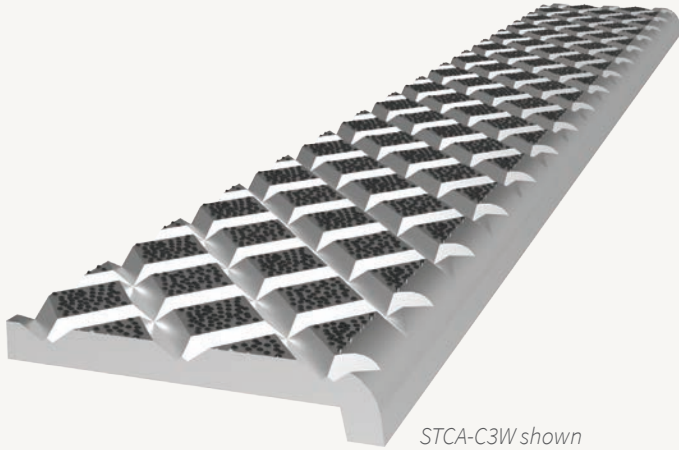
Vision Line Mitered Cuts Painted Undersides Taped Tops

ECOTREAD™ MODELS	WIDTH	NOSING	TREAD/INSERT
STRB-L5D-ECO	5"	Long	EcoTread™ Only
STRB-L9D-ECO	9"	Long	EcoTread™ Only
STRB-L11D-ECO	11"	Long	EcoTread™ Only
STRB-A5D-ECO	5"	Angled Long	EcoTread™ Only
STRB-A9D-ECO	9"	Angled Long	EcoTread™ Only
STRB-A11D-ECO	11"	Angled Long	EcoTread™ Only
STRM-L5D-ECO	5"	Long	EcoTread™ and Resin Strip
STRM-L5D-T-ECO	5"	Long	EcoTread™ and Abrasive Grit Strip
STRM-A5D-ECO	5"	Angled Long	EcoTread™ Resin Strip
STRM-A5D-T-ECO	5"	Angled Long	EcoTread™ Abrasive Grit Strip



# Cast

## STAIR TREAD + NOSING



STCA-C3W shown

Cast Stair Treads are made from type 319 aluminum with a perfect sand cast finish. Ideal for heavy traffic areas such as schools, public buildings and subways, these stair treads are built to last.

### FEATURES

**HIGHLY DURABLE** These treads will take a beating and keep performing; designed to be impact resistant with anti-slip grit and are barrier free.

**ANTI-SLIP SAFETY TREADS** Reduce slip hazards with ADA and OSHA compliant abrasive stair treads. The cross hatch treads with abrasive grit provides a high level of slip resistance.

### DETAILS

**MATERIALS** Aluminum

**APPLICATION** Poured Concrete or Steel Pan

**TREAD** Cross Hatch with Abrasive Grit

**WIDTH** 3 inches

**MOUNTING** Wing Anchor Installed or Shipped Loose with Drilled Holes

**NOSING** Short

**OPTIONS** Painted Undersides or Taped Tops

**CODE COMPLIANCE** 2010 ADA 504, 2015 IBC/ICC Section 1029.13.2, 2018 IBC/ICC Section 1029.14.2 and 2016 California Building Code Section 11B-504.5

### MATERIAL



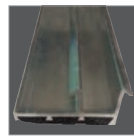
Cast Aluminum

### NOSING



Short

### OPTIONS



Painted Undersides

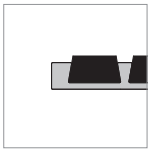


Taped Tops

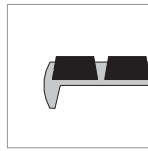
### ORDER GUIDE

MODELS	WIDTH	MATERIAL	INSTALL	STAIR TYPE
STCA-C3W	3"	Aluminum	Anchor, Mechanically Fastened	Poured Concrete
STCA-C3C	3"	Aluminum	Anchor in Place	Poured Concrete
STCA-P3W	3"	Aluminum	Anchor, Mechanically Fastened	Steel Pan
STCA-P3C	3"	Aluminum	Anchor in Place	Steel Pan

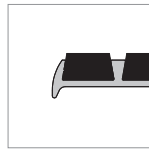
## Nosing Options



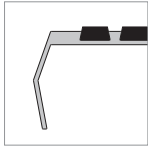
None (N)



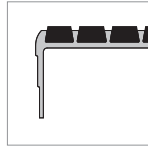
Short (C)



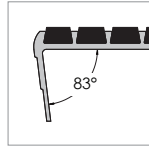
Short-Tipped (P)



Rounded (V)



Long (L)



Angled Long (A)

## Photoluminescent Options



Resin Strip  
(Safe-T-Lume only)



Abrasive Grit Strip  
(Safe-T-Lume only)  
(T)

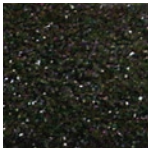


Abrasive Grit  
(C1)



UL listed luminous egress-path marking system SA33914

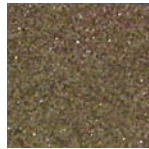
## Abrasive Colors



Black



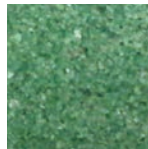
Gray (C4)



Brown (C2)



Burgundy (C3)



Green (C6)



Blue (C9)



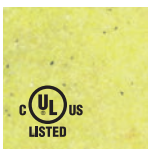
Red (C7)



Buff (orange)  
(C8)



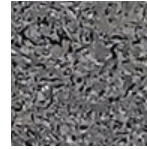
Yellow (C5)



Photoluminescent  
(C1)

Colors shown give only an indication of shade. Samples are available upon request.

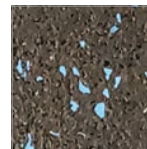
## EcoTread™ Colors



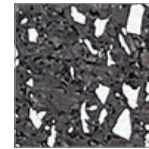
Black<sup>†</sup> 90%



Safety Yellow (C5) 5%



Blue (C10) 84%



Gray (C11) 84%

<sup>†</sup>90% recycled rubber available in Black EcoTread only. All other recycled content noted by color swatches.

Custom colors available, call 800.547.2635 for more information.

## Material Options

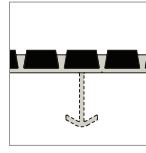


Mill Finish  
Aluminum

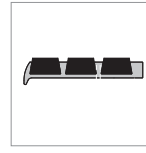


Cast  
Aluminum

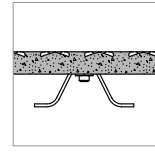
## Mounting Options



Extruded  
Anchor

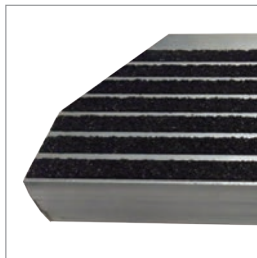


Drilled Holes,  
Mech. Fastened



Wing Anchor

## Additional Options



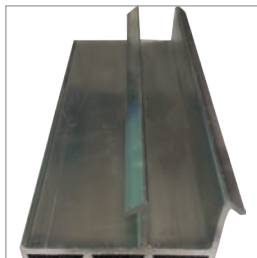
### CUSTOM CUTS

Mitered cuts, notches, and other custom cuts available.



### REPAIR KITS

Used only for aesthetic repairs or small holes. Includes abrasive material and epoxy resin.



### PAINTED UNDERSIDES

Prevents a reaction between the stair treads and concrete where they come into contact with each other.



### TAPED TOPS

Provide protection of exposed surfaces during installation to prevent overspill from pouring concrete.

Visit [nystrom.com](http://nystrom.com) for the latest version of this document and more information.



9300 73rd Avenue North  
Minneapolis, MN 55428

Phone (800) 547-2635  
Fax (866) 900-1959

[info@nystrom.com](mailto:info@nystrom.com)



[nystrom.com](http://nystrom.com)