

# Surface Mount

## FLOOR DOOR, 150PSF

The Surface Mount Floor Door is designed for retrofit applications with internal flanges for easy mounting. This door is an economical option for areas where water or moisture intrusion is not a concern.

### DETAILS

**LOAD** 150psf live load

**MATERIAL** Aluminum: 3/16 inch, mill finish

**COVER** Diamond tread plate

**FRAME** Interior angle (flange)

**INSTALLATION** Surface mount, mechanically fastened

**SPRING** Coil Type 17-7 Stainless Steel, enclosed in Type 316 Stainless Steel telescopic tubes

**HINGES** Heavy duty Type 316 Stainless Steel

**HOLD OPEN ARM** Type 316 Stainless Steel automatic hold open arm with red vinyl grip handle, locks cover in open position

**LATCH** Slam latch Type 316 Stainless Steel with inside lever handle, includes removable 5/16 inch steel square "L" handle and threaded plug

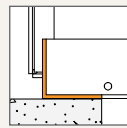
**GASKET** EPDM, around door perimeter

**OPTIONS** Padlock Hasps, Locks, Finishes, Gasket, Safety Grates, Safety Nets, Safety Rails, Skirting

### ORDER GUIDE

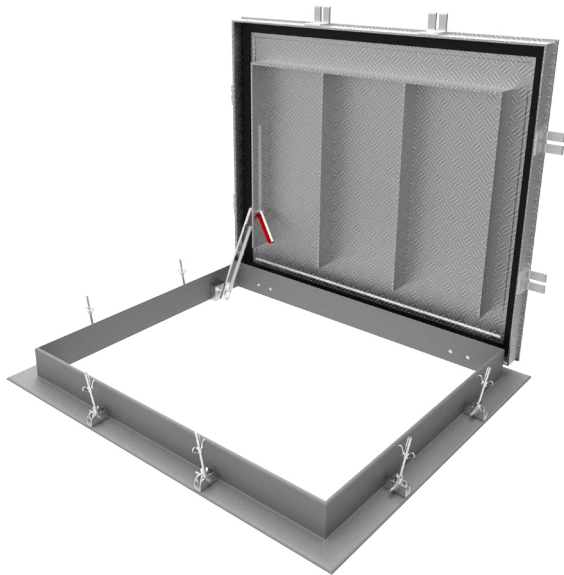
MODEL	WIDTH	X	LENGTH
<b>FDNLA</b>		<b>X</b>	<b>SELN</b>
	Standard Sizes (W x L)		
	24" x 24"		
	30" x 30"		
	30" x 36"		
	36" x 36"		
	42" x 42"		

### FRAME



Interior Angle  
Mech. Fastened

Additional sizes available, call for more information.



# Water Tight

## WELL HATCH, 625PSF

The Water Tight Well Hatch is designed for water-tightness up to 10 foot water column and 625psf load capacity. With waterproof gaskets and pressure locks, this hatch design is ideal for wells and areas prone to flooding.

### DETAILS

**LOAD** 625psf live load

**MATERIAL** Aluminum: 1/4 inch, mill finish

**COVER** Diamond tread plate

**FRAME** Angle

**INSTALLATION** Surface mount, mechanically fastened

**SPRING** Coil Type 17-7 Stainless Steel enclosed in Type 316 Stainless Steel telescopic tubes

**HINGES** Heavy duty Type 316 Stainless Steel butt hinges

**HOLD OPEN ARM** Type 316 Stainless Steel automatic hold open arm locks cover in open position

**LATCH** Type 316 Stainless Steel pressure locks

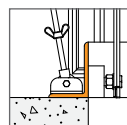
**CERTIFICATION** Tested to 10 foot hydrostatic pressure

**OPTIONS** Padlock Hasps, Locks, Finishes, Gasket, Safety Grates, Safety Nets, Safety Rails, Skirting

### ORDER GUIDE

MODEL	WIDTH	X	LENGTH
<b>FDWTA</b>		<b>X</b>	<b>SSW</b>
	Standard Sizes (W x L)		
	24" x 24"		
	30" x 30"		
	30" x 36"		
	36" x 36"		
	42" x 42"		

### FRAME



Angle Frame  
Mech. Fastened

Additional sizes available, call for more information.