

SPECIFICATIONS:

① **COVER:** 14 GAUGE GALVANNEAL COVER STIFFENED TO WITHSTAND A LIVE LOAD OF 40 PSF WITH A MAX DEFLECTION OF 1/150 OF THE SPAN

② **LINER:** 14 GAUGE GALVANNEAL

③ **CURB AND COUNTERFLASH W/ EZ TAB:**

DBL WALL CURB, 14 GAUGE GALVANNEAL

④ **FINISH: COVER -**
POWDER COAT, GRAY EXTERIOR, BLACK INTERIOR
CURB - POWDER COAT, BLACK

⑤ **GAS SPRING WITH DAMPER:** DESIGNED TO OPEN AGAINST A 10PSF SNOW LOAD IN NOT LESS THAN 2 SECONDS

⑥ **HOLD OPEN ARM:** LOCKS COVER IN FULLY OPEN POSITION - ZINC PLATED STEEL

⑦ **LATCH:** ZINC PLATED ROTARY LATCH ASSEMBLY DESIGNED TO HOLD COVERS CLOSED AGAINST 90 PSF WIND UPLIFT ZINC PLATED STEEL LATCH STRIKERS ON COVERS

⑧ **HINGES:** 304 STAINLESS STEEL BUTT HINGE WITH 1/4" PIN

⑨ **INSULATION:** MINERAL WOOL W/ SOUND MAT, R-VALUE 10

⑩ **GASKETS:** ADHESIVE BACKED EPDM RUBBER EXTRUSION ON CURB AND COVER

⑪ **THERMAL RELEASE MECHANISM:** VENT COVERS OPEN THERMALLY BY HEAT AT FUSIBLE LINK TEMPERATURE 165F °F

⑫ **MANUAL OPERATION:**

VENT COVERS OPEN WITH EXTERNAL MANUAL PULL HANDLE, 1/16" DIA SST CABLE AND VENT COVERS OPEN AND CLOSE WITH MANUAL WINCH, 100FT 1/8" DIA CABLE

⑬ **ELECTRICAL RELEASE:**

VENT COVERS OPEN ELECTRICALLY WHEN ENERGIZED WITH 24VAC/VDC, REQUIRES RESET AT ROOF LEVEL

⑭ **BURGLAR BARS:** NONE

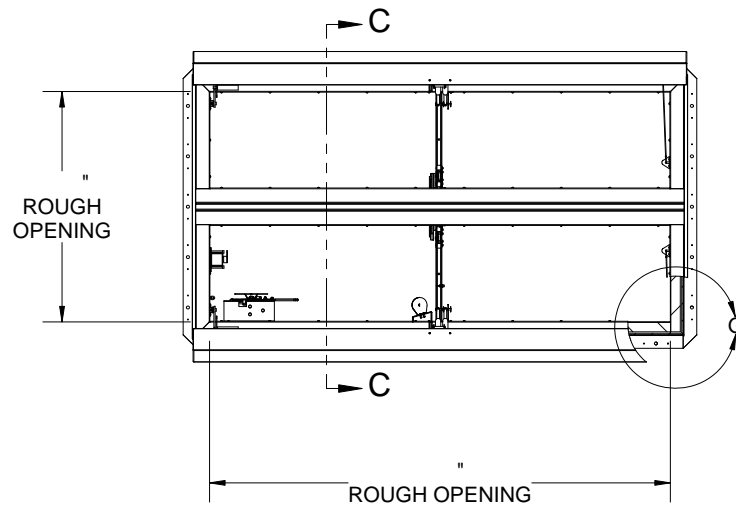
15 **SOUND RATING:** STC48 PER ASTM E90, OITC 36 PER ASTM E1332
SMOKE VENT SIZE "(WIDTH) x "(LENGTH)
EFFECTIVE VENTING AREA 80%



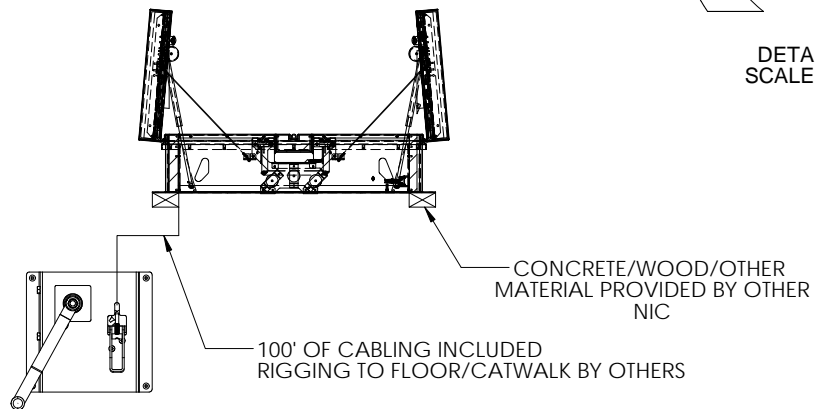
PROJECT:					
ARCHITECT:					
CONTRACTOR:					
QTY:					
PART#:					
<p>9300 73rd Avenue North Minneapolis, MN 55428</p>				TITLE: Smoke Vent, Acoustical STC48,	
				Galv Steel, Black Pwd, Gray Pwd Cvr Ext, Dbl Wall Curb	
	NAME	DATE	SIZE	DWG. NO.	REV
DRAWN	ELW	4/15/14	A		A
RELEASED	ELW	4/15/14		WEIGHT: VARIES	SHEET 1 OF 2

PROPRIETARY AND CONFIDENTIAL: THE INFORMATION CONTAINED IN THIS DRAWING IS THE SOLE PROPERTY OF NYSTROM. ANY REPRODUCTION IN PART OR AS A WHOLE WITHOUT THE WRITTEN PERMISSION OF NYSTROM IS PROHIBITED.

B



A



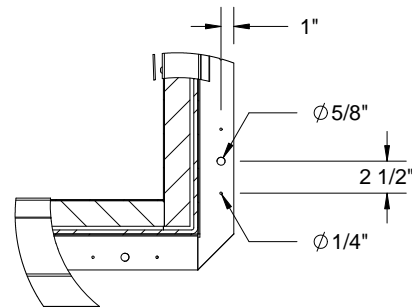
SECTION C-C

UPPER WINCH ASSEMBLY
TO FACILITATE RESETTING AFTER
THERMAL/EXTERNAL/ELECTRICAL
MANUAL RELEASE

FUSIBLE LINK

ELECTRICAL RELEASE

LOWER WINCH ASSEMBLY TO MANUALLY
OPEN AND CLOSE SMOKE VENTS



DETAIL G
SCALE 1 : 15

B

A

				TITLE: Smoke Vent, Acoustical STC48,		
9300 73rd Avenue North Minneapolis, MN 55428				Galv Steel, Black Pwd, Gray Pwd Cvr Ext, Dbl Wall Curb		
	NAME	DATE	SIZE	DWG. NO.	REV	
DRAWN	ELW	4/15/14	A		A	
RELEASED	ELW	4/15/14		WEIGHT: VARIES	SHEET 2 OF 2	