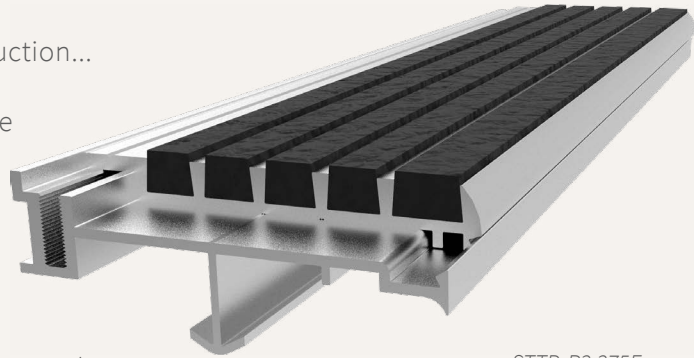


# Two-Part

## STAIR TREAD + NOSING

Save the life of your stair nosings during construction...

Nystrom's Two-Part Stair Treads and Nosings are designed to save your nosings from damage during the construction process. The sub-channel and plywood inserts are installed during the construction phase. When the building is near completion, the temporary plywood tread is replaced with the final install of the abrasive anti-slip safety material.



STTB-P3.375E  
shown

### FEATURES

**EASY TREAD REPLACEMENT** Easily replace worn or damaged treads by unscrewing the existing tread, slide the new one in and fasten to the base.

**CONTINUOUS COLOR** No need to worry about walking off the color as the abrasive material filler is dyed throughout.

### DETAILS

**CHANNEL** Extruded Aluminum

**APPLICATION** Poured Concrete, or Steel Pan

**TREAD** Ribbed Abrasive or Full Abrasive

**WIDTH** 3-3/8 Inches

**LENGTH** Up to 12 linear feet

**MOUNTING** Anchor

**NOSING** Short-Tipped

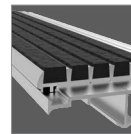
**OPTIONS** Photoluminescent, Vision Line, Mitered Cuts, Painted Undersides or Taped Tops

**CODE COMPLIANCE** 2010 ADA 504, 2015 IBC/ICC Section 1029.13.2, 2018 IBC/ICC Section 1029.14.2, and 2016 California Building Code Section 11B-504.4.1 (STTF-3.375E only) and 11B-504.5

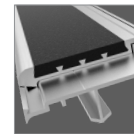
### MODELS

MODEL	WIDTH	TREAD	WIDTH	INSTALL
STTB-3.375E	3-3/8"	Ribbed Abrasive	3-3/8"	Extruded Anchor
STTF-3.375E	3-3/8"	Full Abrasive	3-3/8"	Extruded Anchor

### TREAD

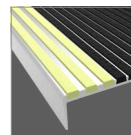


Ribbed  
Abrasive

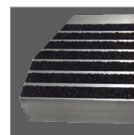


Full  
Abrasive

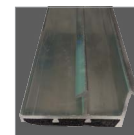
### OPTIONS



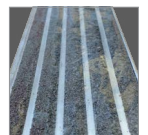
Vision Line



Mitered Cuts



Painted  
Undersides



Taped Tops