

Seismic Glide

WALL XL SYSTEM (WCS/W)

The Seismic Glide Wall XL System is a wall and ceiling expansion control system capable of following complex directional changes and integrates with a variety of wall and ceiling surface treatments. Seismic Glide XL is available in clear or color anodized aluminum, brass or stainless steel to create a high end elegant appearance at an economical price.



FEATURES

EXTRA LARGE OPENINGS For openings larger than 2 inches, this system is designed to accommodate with lateral shear.

REDUCED AIR INFILTRATION The assembly includes a gasket strip on both sides to limit air flow through the joint.

DETAILS

MATERIAL 6063-T6 Aluminum

FINISH Clear Anodized

MOVEMENT

- Thermal: Horizontal and Vertical
- Seismic: Lateral Shear

MOUNTING Surface

JOINT SIZE 3 inches to 24 inches

LENGTH 10 Linear Feet

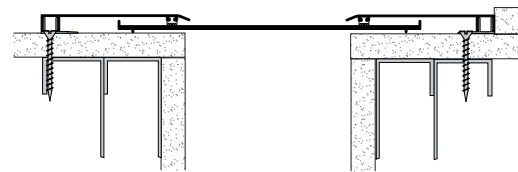
APPLICATION Interior

INSTALLATION Wall or Ceiling

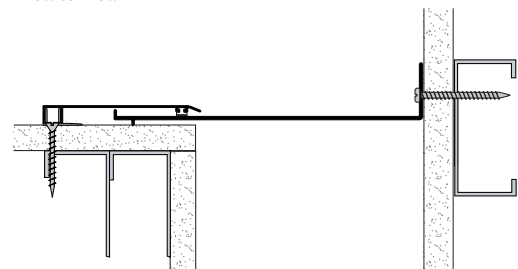
OPTIONS Brass, Stainless Steel, Moisture Barrier, Fire Barrier

MODELS

WALL-TO-WALL			
MODEL	JOINT SIZE AT MEAN T°F	SYSTEM WIDTH	TOTAL MOVEMENT
WCS-300	3" (76mm)	7.56" (192mm)	4" (102mm)
WCS-400	4" (102mm)	13.63" (346mm)	7" (178mm)
WCS-600	6" (152mm)	15.63" (397mm)	7" (178mm)
WCS-800	8" (203mm)	20.75" (527mm)	8" (203mm)
WCS-1000	10" (254mm)	24.75" (629mm)	10" (254mm)
WCS-1200	12" (305mm)	28.75" (730mm)	12" (305mm)
WCS-1800	18" (457mm)	40.75" (1035mm)	18" (457mm)
WCS-2400	24" (610mm)	52.75" (1340mm)	24" (610mm)



Wall-to-Wall



Wall/Ceiling Corner

CORNER			
MODEL	JOINT SIZE AT MEAN T°F	SYSTEM WIDTH	TOTAL MOVEMENT
WCS-300W	3" (76mm)	7.25" (184mm)	3" (76mm)
WCS-400W	4" (102mm)	7.75" (197mm)	4.5" (114mm)
WCS-600W	6" (152mm)	10.75" (273mm)	4.5" (114mm)
WCS-800W	8" (203mm)	13.75" (349mm)	8" (203mm)
WCS-1000W	10" (254mm)	16.75" (425mm)	10" (254mm)
WCS-1200W	12" (305mm)	19.75" (502mm)	12" (305mm)
WCS-1800W	18" (457mm)	28.75" (730mm)	18" (457mm)
WCS-2400W	24" (610mm)	37.75" (959mm)	24" (610mm)